

TECHNICAL MANUAL

**ORGANIZATIONAL, DIRECT SUPPORT AND
GENERAL SUPPORT MAINTENANCE
REPAIR PARTS AND SPECIAL TOOLS LIST**

FOR

**SPRAY OUTFIT, PAINT
NSN 4940-00-255-8683**

HEADQUARTERS, DEPARTMENT OF THE ARMY

10 NOVEMBER 1980

CHANGE

NO. 3

HEADQUARTERS
DEPARTMENT OF THE ARMY
WASHINGTON, D. C., 18 MAY 1992

Organizational, Direct Support and
General Support Maintenance
Repair Parts and Special Tools List
for

SPRAY OUTFIT, PAINT
NSN 4940-00-255-8683

Approved for public release; Distribution is unlimited

TM 5-4940-228-24P, 10 November 1980 is changed as follows:

1. Remove and insert pages as indicated below. New or changed text material is indicated by a vertical bar in the margin. An illustration change is indicated by a miniature pointing hand.

Remove pages

Insert pages

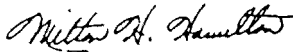
7 and 8
35 and 36

7 and 8
35 and 36

2. Retain this sheet in front of manual for reference purposes.

By Order of the Secretary of the Army:

Official:



MILTON H. HAMILTON
*Administrative Assistant to the
Secretary of the Army*

01379

GORDON R. SULLIVAN
*General, United States Army
Chief of Staff*

DISTRIBUTION:

To be distributed in accordance with DA Form 12-25E, (qty rqr block no. 1640).

CHANGE }
NO. 2 }

HEADQUARTERS
DEPARTMENT OF THE ARMY
WASHINGTON, D.C., 30 December 1987

Organizational, Direct Support and
General Support Maintenance
Repair Parts and Special Tools List

FOR

SPRAY OUTFIT, PAINT
NSN 4940-00-255-8683

TM 5-4940-228-24P, 10 November 1980, is changed as follows:

1. Remove and insert pages as indicated below. New or changed text material is indicated by a vertical bar in the margin. An illustration change is indicated by a miniature pointing hand.

Remove pages

7 and 8

Insert pages

7 and 8

2. Retain this sheet in front of manual for reference purposes.

By Order of the Secretary of the Army:

OFFICIAL:

R. L. DILWORTH
Brigadier General, United States Army
The Adjutant General

CARL E. VUONO
General, United States Army
Chief of Staff

DISTRIBUTION:

To be distributed in accordance with DA Form 12-25A, Unit, Direct Support and General Support Maintenance Requirements for Spray Outfit, Pain (50-6609).

CHANGE }
NO 1 }

HEADQUARTERS
DEPARTMENT OF THE ARMY
WASHINGTON, D.C., 20 July 1987

ORGANIZATIONAL, DIRECT SUPPORT AND
GENERAL SUPPORT MAINTENANCE
REPAIR PARTS AND SPECIAL TOOLS LIST

FOR

SPRAY OUTFIT, PAINT
NSN 4940-00-255-8683

TM 5-4940-228-24P, 10 November 1980, is changed as follows:

1. Remove and insert pages as indicated below. New or changed text material is indicated by a vertical bar in the margin. An illustration change is indicated by a miniature pointing hand.

Remove pages

i/ii
19 and 20
25 and 26
33 through 38

Insert pages

i/ii
19 and 20
25 and 26
33 through 38

2. Retain this sheet in front of manual for reference purposes

By Order of the Secretary of the Army:

Official:

R. L. DILWORTH
Brigadier General, United States Army
The Adjutant General

CARL E. VUONO
General, United States Army
Chief of Staff

DISTRIBUTION:

To be distributed in accordance with DA Form 12-25A, Unit and Direct Support and General Support Maintenance Requirements for Spray Outfit, Paint (50-6609).

TECHNICAL MANUAL

No. 5-4940-228-24P

HEADQUARTERS
DEPARTMENT OF THE ARMY
WASHINGTON, D. C., 10 November 1980

ORGANIZATIONAL, DIRECT SUPPORT AND GENERAL SUPPORT
MAINTENANCE REPAIR PARTS AND SPECIAL TOOLS LIST
(INCLUDING DEPOT MAINTENANCE REPAIR PARTS AND SPECIAL TOOLS)
FOR
SPRAY OUTFIT, PAINT
NSN 4940-00-255-8683

Current as of 5 October 1979

REPORTING ERRORS AND RECOMMENDING IMPROVEMENTS

You can help improve this manual. If you find any mistake or if you know of a way to improve the procedures, please let us know. Mail your letter, DA Form 2028 (Recommended Changes to Publications and Blank Forms), or DA Form 2028-2 located in the back of this manual direct to: Commander, U.S. Army Troop Support Command, ATTN: AMSTR-MCTS, 4300 Goodfellow Boulevard, St. Louis, MO 63120-1798. A reply will be furnished directly to you.

TABLE OF CONTENTS

| | Page | Illus. Figure |
|--|------|------------------|
| Section I. INTRODUCTION | | |
| II. REPAIR PARTS LIST | 7 | |
| Group 01 Spray gun assembly | 7 | 1 |
| 02 Pressure cup assembly. | 9 | 2 |
| 03 Extension assembly | 11 | 3 |
| 04 Hose assembly | 13 | 4 |
| 05 Pressure tank assembly | 19 | 5 |
| 06 Respirator | 23 | 6 |
| 07 Chest, spray outfit | 25 | 7 |
| 08 Compressor Assembly | 31 | 8 |
| Section III. Special tools list (not applicable) | | |
| IV. NSN, Part No. Index | 35 | |

Section I. INTRODUCTION

1. Scope. This manual lists spares and repair parts; special tools; special test, measurement, and diagnostic equipment (TMDE), and other special support equipment required for performance of organizational, direct support, and general support depot maintenance of the spray outfit, paint. It authorizes the requisitioning and issue of spares and repair parts as indicated by the source and maintenance codes,

2. General. This Repair Parts and Special Tools List is divided into the following sections:

a. Section II. Repair Parts List. A list of spares and repair parts authorized for use in the performance of maintenance. The list also includes parts which must be removed for replacement of the authorized parts. Parts lists are composed of functional groups in ascending numeric sequence, with the parts in each group listed in figure and item number sequence. Bulk materials are listed in NSN sequence.

b. Section III. Special Tools List. A list of special tools, special TMDE, and other special support equipment authorized for the performance of maintenance,

c. Section IV. National Stock Number and Part Number Index. A list, in National Item Identification Number (NIIN) sequence, of all National Stock Numbers (NSN) appearing in the listings, followed by a list in alphanumeric sequence of all part numbers appearing in the listings. National stock numbers and part numbers are cross-referenced to each illustration figure and item number appearance. This index is followed by a cross-reference list of reference designators to figure and item numbers.

3. Explanation of Columns.

a. Illustration. This column is divided as follows:

(1) Figure Number. Indicates the figure number of the illustration on which the item is shown,

(2) Item Number, The number used to identify item called out in the illustration.

b. Source, Maintenance and Recoverability (SMR) Codes.

(1) Source Code. Source codes indicate the manner of acquiring support items for maintenance, repair or overhaul of end items. Source codes are entered in the first and second positions of the Uniform SMR Code format as follows:

| Code | Definition |
|-------------|---|
| P A | Item procured and stocked for anticipated or known usage. |
| P B | Item procured and stocked for insurance purposes because essentiality dictates that a minimum quantity be available in the supply system. |
| P C | Item procured and stocked and which otherwise would be coded PA except that it is deteriorative in nature. |
| P D | Support item, excluding support equipment, procured for initial issue or outfitting and stocked only for subsequent or additional initial issues or outfitting. Not subject to automatic replenishment. |
| P E | Support equipment procured and stocked for initial issue or outfitting to specified maintenance repair activities, |
| P F | Support equipment which will not be stocked but which will be centrally procured on demand. |
| P G | Item procured and stocked to provide for sustained support for the life of the equipment. It is applied to an item peculiar to the equipment which, because of probable discontinuance or shutdown of production facilities, would prove uneconomical to reproduce at a later time. |
| K D | An item of a depot overhaul/repair kit and not purchased separately. Depot kit defined as a kit that provides items required at the time of overhaul or repair. |
| K F | An item of a maintenance kit and not purchased separately. Maintenance kit defined as a kit that provides an item that can be replaced at organizational or intermediate levels of maintenance. |
| K B | Item included in both a depot overhaul/repair kit and a maintenance kit. |

| <i>Code</i> | <i>Definition</i> |
|-------------|---|
| M O | Item to be manufactured or fabricated at the organizational level. |
| M F | Item to be manufactured or fabricated at the direct support maintenance level. |
| M H | Item to be manufactured or fabricated at the general support maintenance level. |
| M D | Item to be manufactured or fabricated at the depot support maintenance level. |
| A O | Item to be assembled at organizational level. |
| A F | Item to be assembled at the direct support maintenance level. |
| A H | Item to be assembled at general support maintenance level. |
| A D | Item to be assembled at depot maintenance level. |
| X A | Item is not procured or stocked because the requirements for the item will result in the replacement of the next higher assembly. |
| X B | Item is not procured or stocked. If not available through salvage, requisition. |
| X C | Installation drawing, diagram, instruction sheet, field service drawing, that is identified by manufacturer's part number. |
| X D | A support item that is not stocked. When required, item will be procured through normal supply channels. |

NOTE

Cannibalization or salvage maybe used as a source of supply for any items source coded above except those coded XA and XD.

(2) Maintenance Code. Maintenance codes are assigned to indicate the levels of maintenance authorized to USE and REPAIR support items. The maintenance codes are entered in the third and fourth positions of the Uniform SMR Code format as follows:

(a) The maintenance code entered in the third position will indicate the lowest maintenance level authorized to remove, replace, and use the support item. The maintenance code entered in the fourth position will indicate one of the following levels of maintenance:

| <i>Code</i> | <i>Definition</i> |
|-------------|---|
| C | Crew or operator maintenance performed within organizational maintenance. |
| O | Support item is removed, replaced, used at the organizational level. |
| F | Support item is removed, replaced, used at the direct support level. |
| H | Support item is removed, replaced, used at the general support level. |
| D | Support items that are removed, replaced, used at depot, mobile depot, or specialized repair activity only. |

(b) The maintenance code entered in the fourth position indicates whether the item is to be repaired and identifies the lowest maintenance level with the capability to perform complete repair (i.e., all authorized maintenance functions). This position will contain one of the following maintenance codes:

| <i>Code</i> | <i>Application/Explanation</i> |
|-------------|--|
| o | The lowest maintenance level capable of complete repair of the support item is the organizational level. |
| F | The lowest maintenance level capable of complete repair of the support item is the direct support level. |
| H | The lowest maintenance level capable of complete repair of the support item is the general support level. |
| D | The lowest maintenance level capable of complete repair of the support item is the depot level. |
| L | Repair restricted to designated, Specialized Repair Activity. |
| Z | Nonreparable. No repair is authorized. |
| B | No repair is authorized. The item maybe reconditioned by adjusting, lubricating, etc., at the user level. No parts or special tools are procured for the maintenance of this item. |

(3) Recoverability Code. Recoverability codes are assigned to support items to indicate the disposition action on unserviceable items. The recoverability code is entered in the fifth position of the Uniform SMR Code format as follows:

Recoverability

| Code | Definition |
|-------------|--|
| Z | Nonreparable item. When unserviceable, condemn and dispose at the level indicated in position 3. |
| O | Reparable item. When uneconomically repairable, condemn and dispose at organizational level. |
| F | Reparable item. When uneconomically repairable, condemn and dispose at the direct support level. |
| H | Reparable item. When uneconomically repairable, condemn and dispose at the general support level. |
| D | Reparable item. When beyond lower level repair capability, return to depot. Condemnation and disposal not authorized below depot level. |
| L | Reparable item. Repair, condemnation, and disposal not authorized below depot/specialized repair activity level. |
| A | Item requires special handling or condemnation procedures because of specific reasons (i.e., precious metal content, high dollar value, critical material or hazardous material). Refer to appropriate manuals/directives for specific instructions. |

c. National Stock Number. Indicates the National stock number assigned to the item and which will be used for requisitioning purposes.

d. Part Number. Indicates the primary number used by the manufacturer which controls the design and characteristics of the item by means of its engineering drawings, specifications standards, and inspection requirements to identify an item or range of items.

NOTE

When a stock numbered item is requisitioned, the repair part received may have a different part number than the part being replaced.

e. Federal Supply Code for Manufacturer (FSCM). The FSCM is a 5-digit numeric code listed in SB 708-42 which is used to identify the manufacturer, distributor, or Government agency, etc.

f. Description. Indicates the Federal item name and, if required, a minimum description to identify

the item. Items that are included in kits and sets are listed below the name of the kit or set, with the quantity of each item in the kit or set indicated in the quantity incorporated in unit column. When the part to be used differs between serial numbers of the same model, the effective serial numbers are shown as the last line of the description. In the Special Tools List, the initial basis of issue (BOI) appears as the last line in the entry for each special tool, special TMDE, and other special support equipment. When density of equipments supported exceeds density spread indicated in the basis of issue, the total authorization is increased accordingly.

g. Unit of Measure (U/M). Indicates the standard of the basic quantity of the listed item as used in performing the actual maintenance function. This measure is expressed by a two-character alphabetical abbreviation (e.g., ea, in., pr, etc.). When the unit of measure differs from the unit of issue, the lowest unit of issue that will satisfy the required units of measure will be requisitioned.

h. Quantity Incorporated in Unit. Indicates the quantity of the item used in the breakout shown on the illustration figure, which is prepared for a functional group, subfunctional group, or an assembly, A "V" appearing in this column in lieu of a quantity indicates that no specific quantity is applicable (e.g., shims, spacers, etc.).

4. Special Information.

a. Repair parts kits and gasket sets appear as the last entries in the repair parts listing for the figure in which its parts are listed as repair parts.

b. The following publication pertains to spray outfit, paint and its components:

Publication and Short Title

TM 5-4940-228-14, Maintenance Manual

5. How to Locate Repair Parts.

a. When National Stock Number or Part Number is Unknown:

(1) First. Using the table of contents, determine the functional group within which the repair part belongs. This is necessary since illustrations are prepared for functional groups, and listings are divided into the same groups.

(2) Second. Find the illustration covering the functional group to which the repair part belongs.

(3) *Third.* Identify the repair part on the illustration and note the illustration figure number and item number of the repair part.

(4) *Fourth.* Using the Repair Parts Listing, find the figure and item number noted on the illustration.

b. When National Stock Number or Part Number is Known.

(1) *First.* Using the Index of National Stock Numbers and Part Numbers, find the pertinent National stock number or part number. This index is in NIIN sequence followed by a list of part numbers in alphanumeric sequence, cross-referenced to the illustration figure number and item number.

(2) *Second.* After finding the figure and item number, locate the figure and item number in the repair parts list.

6. Abbreviations.

| <i>Abbreviations</i> | <i>Explanation</i> |
|-----------------------------|---------------------------|
| ASSY | Assembly(ies) |
| FT | Feet(foot) |
| HD | Head |
| HEX | Hexagon |
| IN | Inch(es) |
| LG | Long(length) |
| NO | Number(s) |

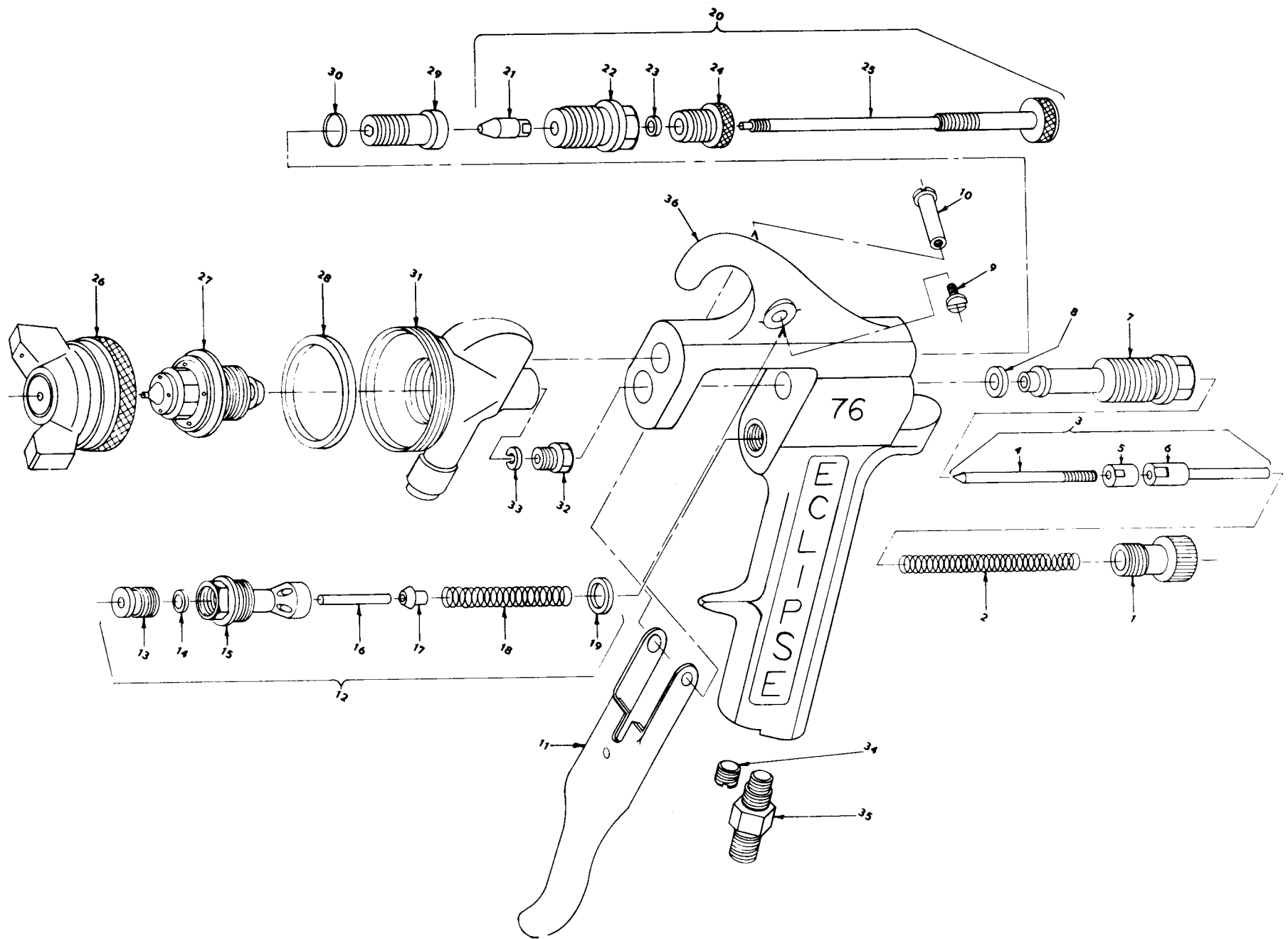


Figure 1. Spray Gun Assembly

| SECTION II (1) ILLUSTRATION (A) (B) FIG ITEM NO NO | | (2) SMR CODE | (3) NATIONAL STOCK NUMBER | (4) PART NUMBER | (5) FSCM | (6) DESCRIPTION | (7) USABLE ON CODE U/M | (8) QTY INC IN UNIT |
|---|----|--------------------|------------------------------------|-----------------------|-------------|---|---------------------------|---------------------------------|
| | | | | | | GROUP 01 SPRAY GUN ASSEMBLY | | |
| 1 | | PAOFF | 4940-00-261-8413 | 50-6510 | 19272 | GUN ASSY,SPRAY(ALSO NSN 4940-01-174-5164) | EA | 1 |
| 1 | 1 | XDOZZ | | 20-5660 | 19272 | .SCREW,FLUID CONTROL | EA | 1 |
| 1 | 2 | PAOZZ | | 3-4359 | 19272 | .SPRING,FL CONTROL | EA | 1 |
| 1 | 3 | XDOZZ | 4820-01-165-6863 | 50-6507 | 19272 | .NEEDLE ASSY | EA | 1 |
| 1 | 4 | XBOZZ | | 20-5966 | 19272 | ..NEEDLE | EA | 1 |
| 1 | 5 | XBOZZ | | 50-5967 | 19272 | ..LOCKNUT | EA | 1 |
| 1 | 6 | XBOZZ | | 20-5968 | 19272 | ..EXTENSION,LOCKNUT | EA | 1 |
| 1 | 7 | XBOZZ | | 20-5962 | 19272 | .HOUSING,FL CONTROL | EA | 1 |
| 1 | 8 | PAOZZ | 5330-02-091-0258 | 4-4438 | 19272 | .GASKET,FL CONTROL | EA | 2 |
| 1 | 9 | XBOZZ | | M36C4832-5E | 02015 | .SCREW,TRIGGER | EA | 1 |
| 1 | 10 | XBOZZ | | 1-4342 | 19272 | .STUD,TRIGGER | EA | 1 |
| 1 | 11 | XBOZZ | | 50-6508 | 19272 | .TRIGGER ASSY | EA | 1 |
| 1 | 12 | PAOOF | 4820-01-165-6862 | 50-6511 | 19272 | .VALVE ASSY,AIR | EA | 1 |
| 1 | 3 | PAOZZ | | 20-5652 | 19272 | ..NUT,PACKING | EA | 2 |
| 1 | 14 | PAOZZ | 5330-00-285-7384 | 17433 | 81321 | ..PACKING | EA | 3 |
| 1 | 15 | XBOZZ | | 20-5977 | 19272 | ..BODY,AIR VALVE | EA | 1 |
| 1 | 16 | XBOZZ | | 20-5651 | 19272 | ..STEM,AIR VALVE | EA | 1 |
| 1 | 17 | PAOZZ | 4820-01-091-1458 | 20-5654 | 19272 | ..VALV,AIR | EA | 1 |
| 1 | 18 | XBOZZ | | 3-4358 | 19272 | ..SPRING,AIR VALVE | EA | 1 |
| 1 | 19 | PAOZZ | 5330-01-092-0258 | 4-4438 | 19272 | ..GASKET | EA | REF |
| 1 | 20 | PFOZZ | 4820-01-116-5295 | 50-6513 | 19272 | ..CONTROL ASSY,FAN | EA | 1 |
| 1 | 21 | XAOZZ | | 20-5964 | 19272 | ..HEAD,FAN CONTROL | EA | 1 |
| 1 | 2 | XAOZZ | | 20-5974 | 19272 | ..BODY,FAN CONTROL | EA | 1 |
| 1 | 23 | PAOZZ | 5330-00-285-7384 | 17433 | 81321 | ..PACKING | EA | REF |
| 1 | 24 | XBOZZ | | 20-5965 | 19272 | ..SCREW,FAN CONTROL | EA | 1 |
| 1 | 25 | XBOZZ | | 50-6506 | 19272 | ..ROD ASSY,FAN | EA | 1 |
| 1 | 26 | PAOZZ | 4730-01-149-5795 | 50-6509 | 19272 | .NOZZLE ASSY,AIR | EA | 1 |
| 1 | 27 | XAOZZ | | 43-15-1-4 | 19272 | .NOZZLE,FLUID | EA | 1 |
| 1 | 28 | PAOZZ | 5330-01-091-7693 | 4-4437 | 19272 | .GASKET | EA | 1 |
| 1 | 29 | XBOZZ | | 20-5963 | 19272 | .SCREW,GUN HEAD | EA | 1 |
| 1 | 30 | PAOZZ | 5330-01-091-3932 | 4-4420 | 19272 | .GASKET | EA | 1 |
| 1 | 31 | XAOZZ | | 20-5972 | 19272 | .HEAD,GUN | EA | 1 |
| 1 | 32 | XBPZZ | | 20-5652 | 19272 | .NUT,PACKING | EA | REF |
| 1 | 33 | PAOZZ | 5330-00-285-7384 | 17433 | 81321 | .PACKING | EA | REF |
| 1 | 34 | XBOZZ | | 5-07-12-8 | 19272 | .PLUG | EA | 1 |
| 1 | 35 | PAOZZ | 4730-01-092-3029 | 20-5572 | 19272 | .CONNECTOR,AIR | EA | 1 |
| 1 | 36 | XAOZZ | | 20-5973 | 19272 | .HANDLE,GUN | EA | 1 |

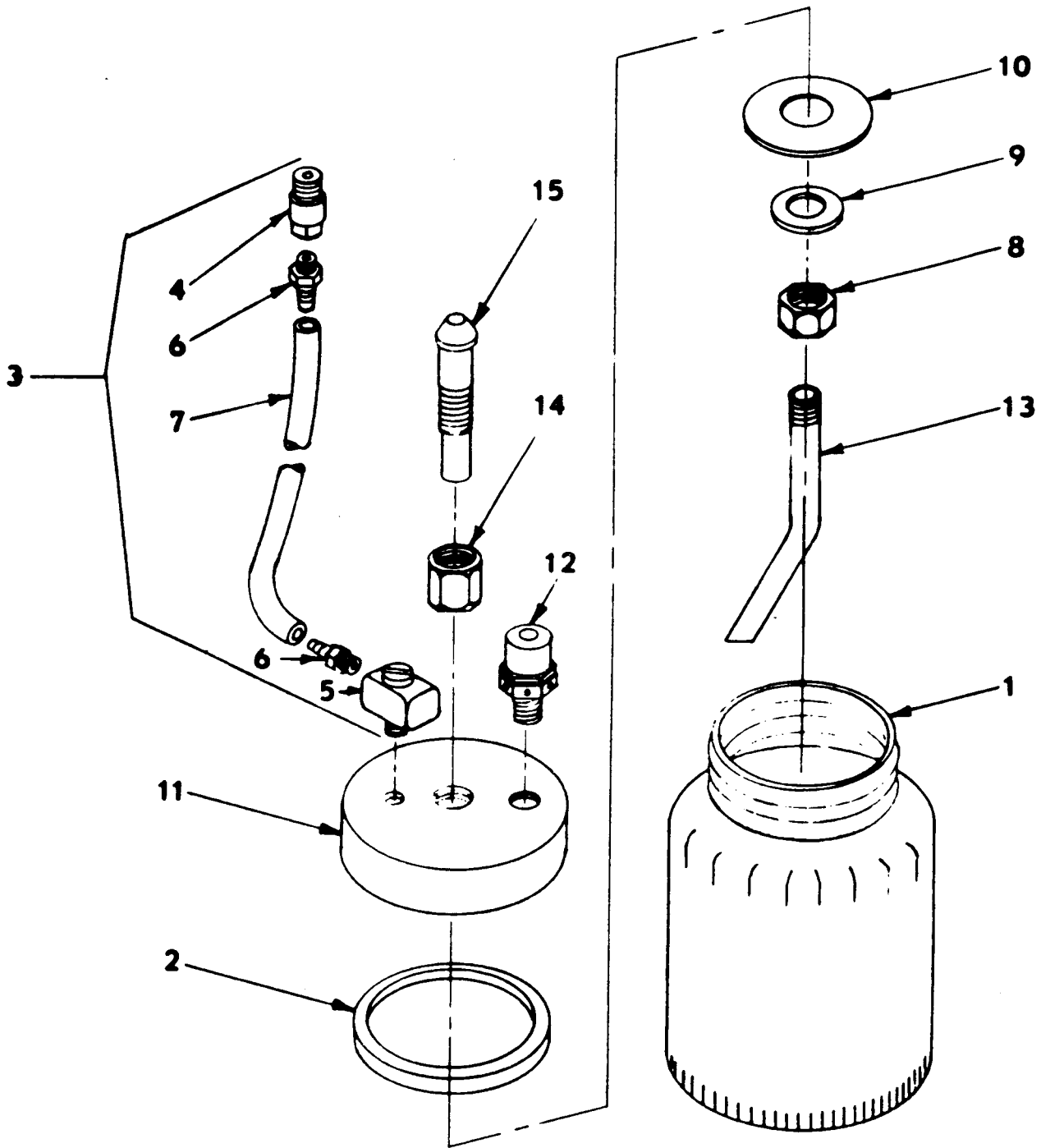


Figure 2. PressureCup Assembly

| SECTION II (1) ILLUSTRATION | | (2) | (3) | (4) | (5) | (6) | (7) | (8) |
|-----------------------------------|------------|-------------|-----------------------------|----------------|-------|-----------------------|----------------|-------------|
| FIG NO | ITEM NO | SMR CODE | NATIONAL STOCK NUMBER | PART NUMBER | FSCM | DESCRIPTION | USABLE ON CODE | U/M UNIT |
| GROUP 02 PRESSURE CUP ASSEMBLY | | | | | | | | |
| 2 | | PBOOO | | 50-6539 | 19227 | CUP ASSEMBLY,PRESSURE | EA | 1 |
| 2 | 1 | XBOZZ | | 20-5997 | 19272 | .CUP,1 QT | EA | 1 |
| 2 | 2 | PAOZZ | | 4-4406 | 19272 | .GASKET,CUP | EA | 1 |
| 2 | 3 | PBOZZ | | 50-6612 | 19272 | .TUBE ASSY,PRESSURE | EA | 1 |
| 2 | 4 | XBOZZ | | 20-6020 | 19272 | ..ADAPTER | EA | 1 |
| 2 | 5 | XBOZZ | | 15002-1 | 90526 | ..FITTING,MINIATURE L | EA | 1 |
| 2 | 6 | XBOZZ | | 11752-1 | 90526 | ..FITTING,HOSE | EA | 2 |
| 2 | 7 | XBOZZ | | 3814-1 | 90526 | ..TUBE | EA | 1 |
| 2 | 8 | XBOZZ | | 1-10-15-3 | 19272 | .NUT,JAM | EA | 1 |
| 2 | 9 | XBOZZ | | 1-20-29-2 | 19272 | .WASHER | EA | 1 |
| 2 | 10 | XBOZZ | | 20-5998 | 19272 | .DIAPHRAGM | EA | 1 |
| 2 | 11 | XBOZZ | | 20-5999 | 19272 | .COVER,PRESSURE | EA | 1 |
| 2 | 12 | XBOZZ | | 6-4341 | 19272 | .VALVE,SAFETY 45PSI | EA | 1 |
| 2 | 13 | XBOZZ | | 20-6000 | 19272 | .POST,FLUID | EA | 1 |
| 2 | 14 | XBOZZ | | 20-4588 | 19272 | .NUT,COMPRESSION | EA | 1 |
| 2 | 15 | XBOZZ | | 20-5980 | 19272 | .STEM | EA | 1 |

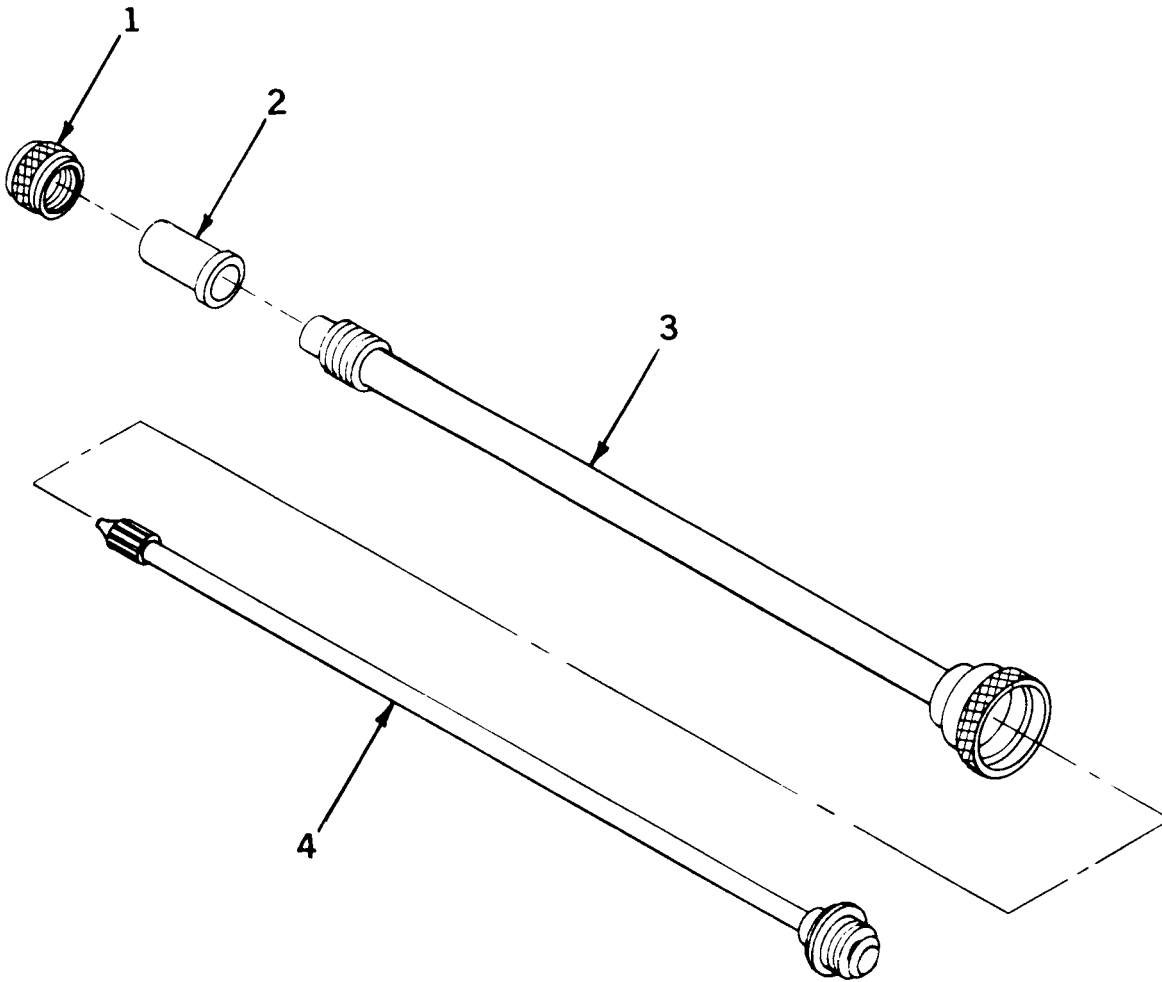


Figure 3. Extension Assembly.

| SECTION II (1) ILLUSTRATION | | (2) | (3) | (4) | (5) | (6) | (7) | (8) |
|-----------------------------------|------------|-------------|-----------------------------|----------------|-------|------------------|----------------|--------------------------|
| FIG NO | ITEM NO | SMR CODE | NATIONAL STOCK NUMBER | PART NUMBER | FSCM | DESCRIPTION | USABLE ON CODE | QTY INC IN UNIT |
| GROUP 03 EXTENSION ASSEMBLY | | | | | | | | |
| 3 | | PBOFF | | 50-6602-48 | 19272 | EXTENSION ASSY | | EA 1 |
| 3 | 1 | XBOZZ | | 20-4616 | 19272 | .LOCKNUT | | EA 1 |
| 3 | 2 | XBOZZ | | 41-7-4-3 | 19272 | .NOZZLE,ST,SLOT | | EA 1 |
| 3 | 3 | XAOZZ | | 50-6615 | 19272 | .TUBE ASSY,AIR | | EA 1 |
| 3 | 4 | XAOZZ | | 50-6616 | 19272 | .TUBE ASSY,FLUID | | EA 1 |

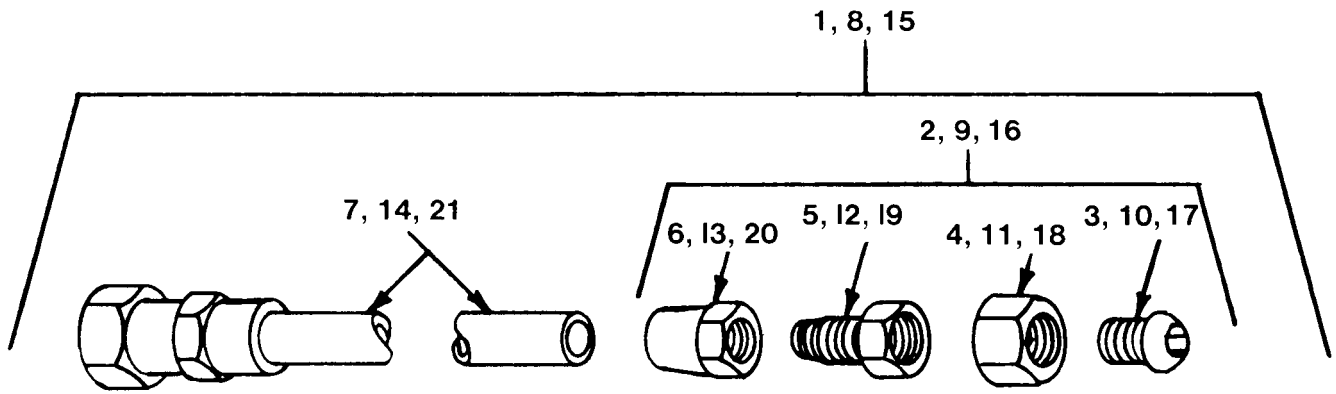


Figure 4. Hose Assembly

| SECTION II (1) ILLUSTRATION | | (2) | (3) | (4) | (5) | (6) | (7) | (8) |
|-----------------------------------|-------------------|-------------|-----------------------------|----------------|-------|----------------------|--------------------|--------------------------|
| (A) FIG NO | (B) ITEM NO | SMR CODE | NATIONAL STOCK NUMBER | PART NUMBER | FSCM | DESCRIPTION | USABLE ON CODE U/M | QTY INC IN UNIT |
| GROUP 04 HOSE ASSEMBLY | | | | | | | | |
| 4 | 1 | PAOFF | | 7-118-225 | 19272 | HOSE ASSY, FL 25FT | EA | 1 |
| 4 | 2 | PBFZZ | | 50-4360-7 | 19272 | .CONNECTOR ASSY | EA | 2 |
| 4 | 3 | XAOZZ | | 20-4587 | 19272 | ..SEAT | EA | 2 |
| 4 | 4 | XAOZZ | | 20-4584 | 19272 | ..NUT | EA | 2 |
| 4 | 5 | XAOZZ | | 20-4592 | 19272 | ..STEM | EA | 2 |
| 4 | 6 | XAOZZ | | 20-4591 | 19272 | ..SLEEVE | EA | 2 |
| 4 | 7 | XAOZZ | | 7-103-225 | 19272 | .HOSE, FLUID 25FT | EA | 1 |
| 4 | 8 | PAOFF | | 7-116-125 | 19272 | .HOSE ASSY, AIR 25FT | EA | 1 |
| 4 | 9 | PBFZZ | | 50-4360-1 | 19272 | .CONNECTOR ASSY | EA | 2 |
| 4 | 10 | XAOZZ | | 20-4585 | 19272 | ..SEAT | EA | 2 |
| 4 | 11 | XAOZZ | | 20-4325 | 19272 | ..NUT | EA | 2 |
| 4 | 12 | XAOZZ | | 20-4586 | 19272 | ..STEM | EA | 2 |
| 4 | 13 | XAOZZ | | 20-4590 | 19272 | ..SLEEVE | EA | 1 |
| 4 | 14 | PAOZZ | | 7-102-125 | 19272 | .HOSE, AIR 25FT | EA | 1 |
| 4 | 15 | PAOFF | | 7-1111-150 | 19272 | HOSE ASSY, AIR 50FT | EA | 1 |
| 4 | 16 | PBFZZ | | 50-4360-10 | 19272 | .CONNECTOR ASSY | EA | 2 |
| 4 | 17 | XAOZZ | | 20-4585 | 19272 | ..SEAT | EA | 2 |
| 4 | 18 | XAOZZ | | 20-4325 | 19272 | ..NUT | EA | 2 |
| 4 | 19 | XAOZZ | | 20-5617 | 19272 | ..STEM | EA | 2 |
| 4 | 20 | XAOZZ | | 20-4591 | 19272 | ..SLEEVE | EA | 2 |
| 4 | 21 | PAFZZ | | 7-103-150 | 19272 | .HOSE, AIR 50FT | EA | 1 |

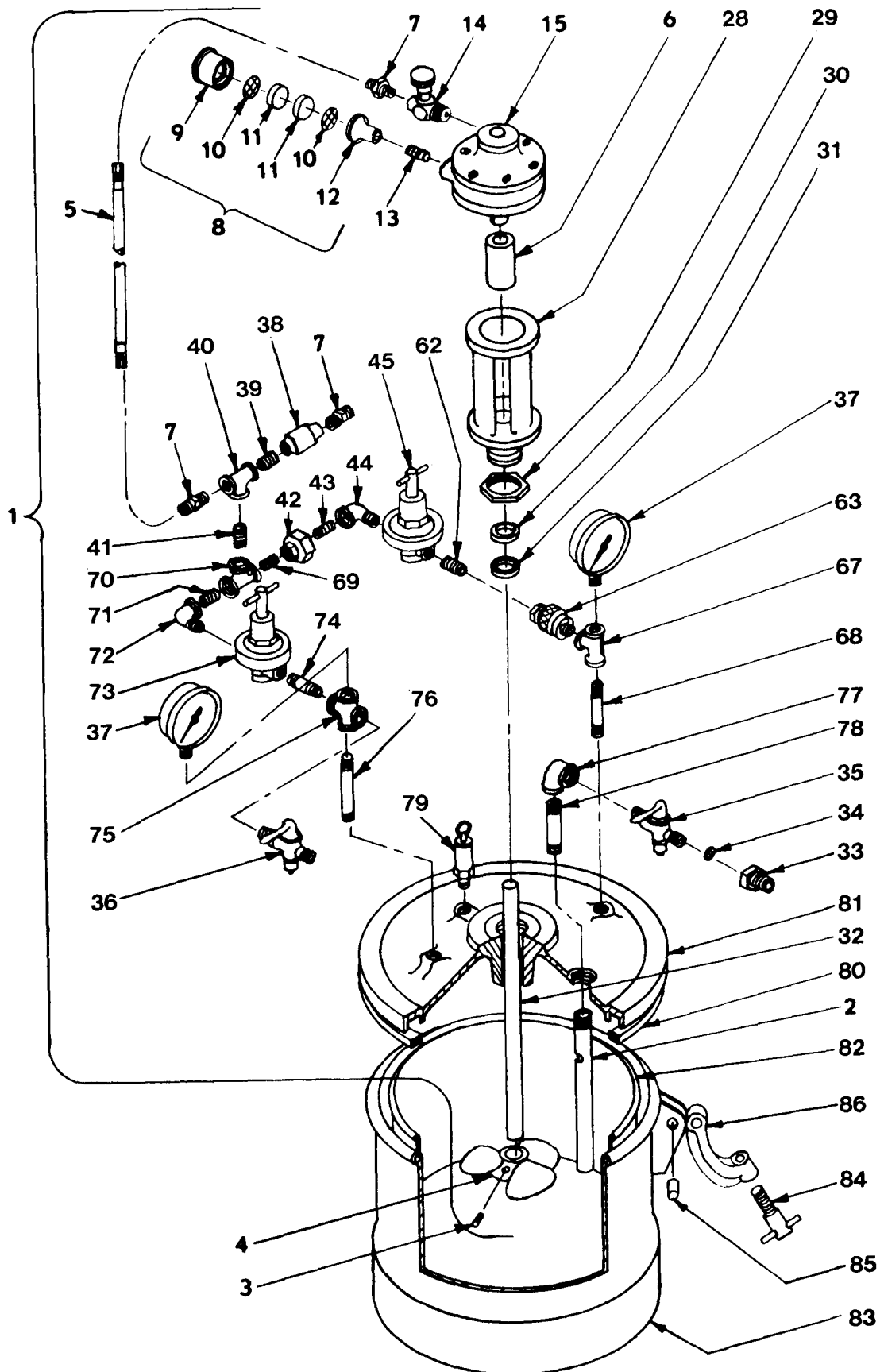


Figure 5. Pressure Tank Assembly (Sheet 1 of 4)

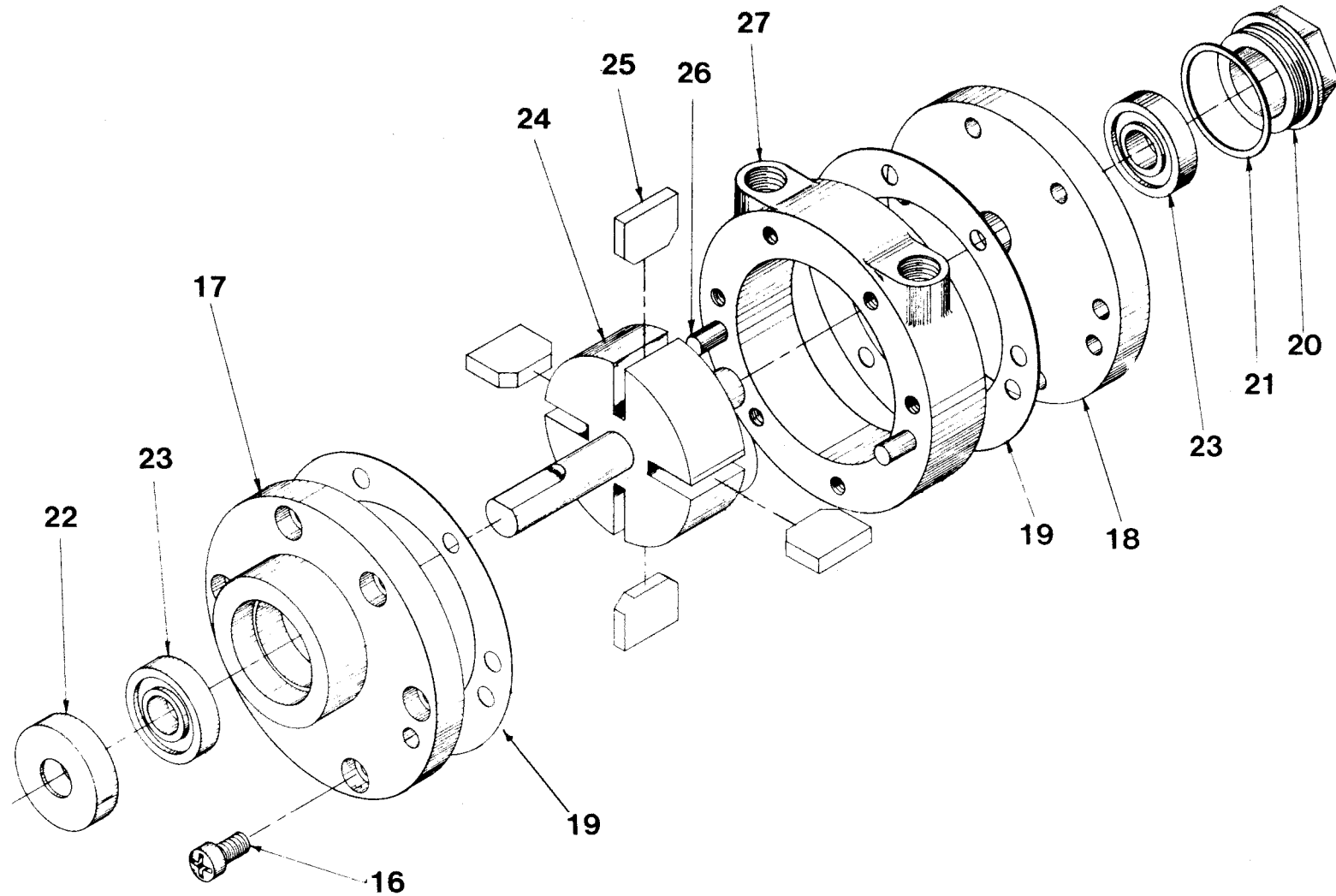


Figure 5. Pressure Tank Assembly
(Sheet 2 of 4)

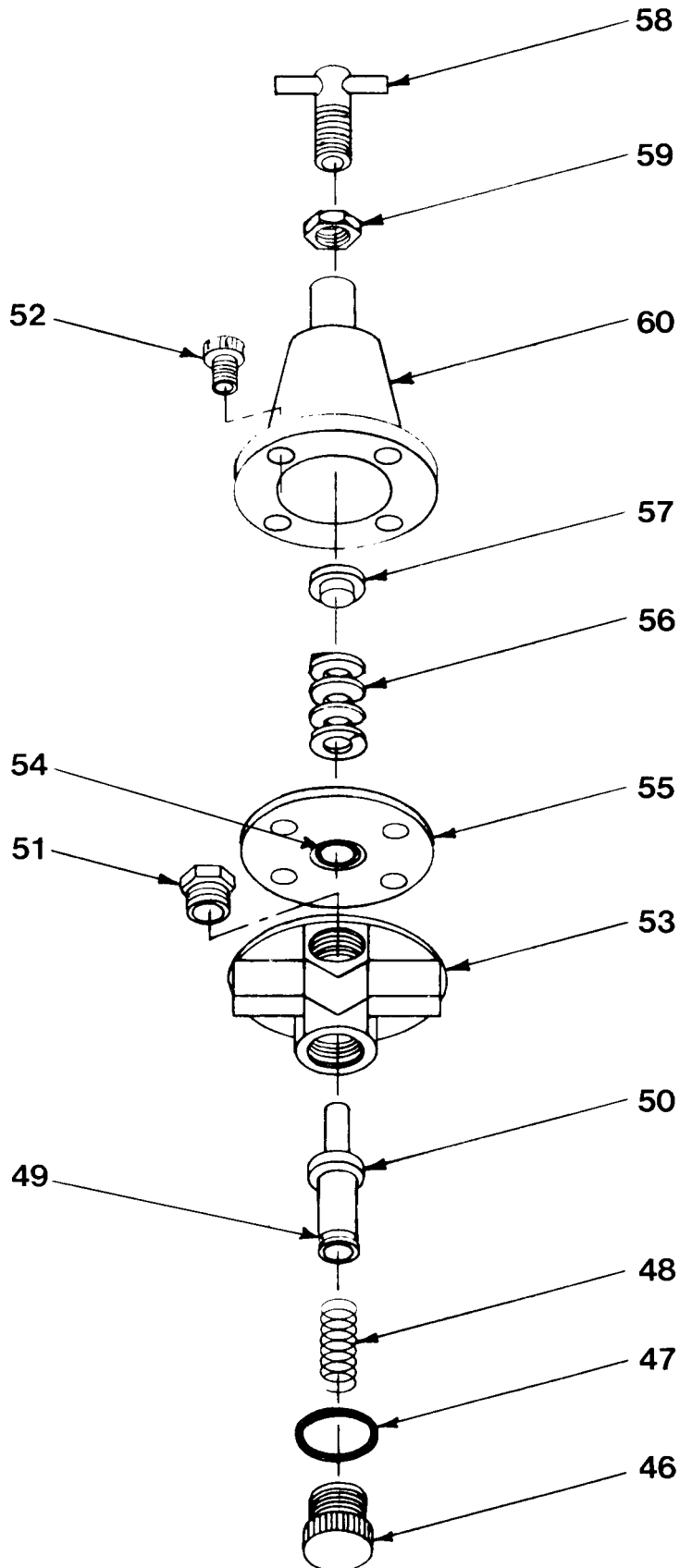


Figure 5. Pressure Tank Assembly
(Sheet 3 of 4)

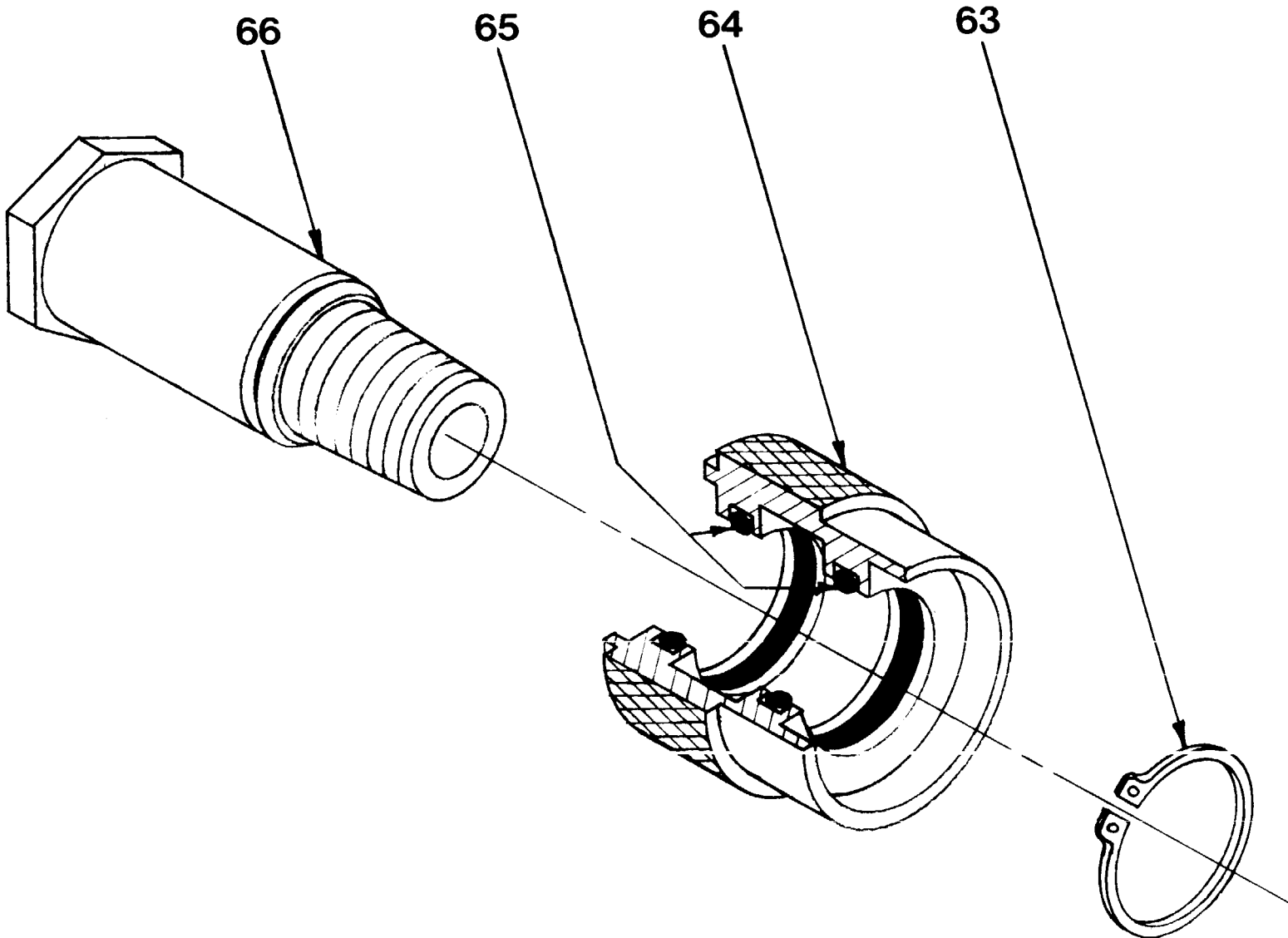


Figure 5. Pressure Tank Assembly
(Sheet 4 of 4)

| SECTION II (1) ILLUSTRATION | | (2) | (3) | (4) | (5) | (6) | (7) | (8) |
|-----------------------------------|------------|-------------|-----------------------------|----------------|-------|---------------------------------|--------------------|--------------------------|
| FIG NO | ITEM NO | SMR CODE | NATIONAL STOCK NUMBER | PART NUMBER | FSCM | DESCRIPTION | USABLE ON CODE U/M | QTY INC IN UNIT |
| | | | | | | GROUP 05 PRESSURE TANK ASSEMBLY | | |
| 5 | | XBOZZ | | 50-6523 | 19272 | TANK ASSY,PRESSURE | EA | 1 |
| 5 | 1 | XBOFF | | 50-6605 | 19272 | .HEAD ASSY,CONTROL | EA | 1 |
| 5 | 2 | XBFZZ | | 50-5005 | 19272 | ..POST,FLUID | EA | 1 |
| 5 | 3 | XBFZZ | | 1-05-1004-5 | 19272 | ..SCREW,PROP | EA | 1 |
| 5 | 4 | XBOZZ | | 20-5082 | 19272 | ..PROPELLER | EA | 1 |
| 5 | 5 | PAFZZ | | 50-6611 | 19272 | ..HOSE ASSY,PRESSURE | EA | 1 |
| 5 | 6 | XBFZZ | | 11-5693 | 19272 | ..COUPLING | EA | 1 |
| 5 | 7 | XBOZZ | | 20-4400-4 | 19272 | ..FITTING | EA | 3 |
| 5 | 8 | PBOFF | | 50-4419-1 | 19272 | ..MUFFLER ASSY | EA | 1 |
| 5 | 9 | XBOZZ | | 20-4439-1 | 19272 | ...CAP | EA | 1 |
| 5 | 10 | PAOZZ | | 20-4438-1 | 19272 | ...SCREEN | EA | 2 |
| 5 | 11 | PAOZZ | | 20-4435-1 | 19272 | ...FELT | EA | 2 |
| 5 | 12 | XAOZZ | | 20-4440-1 | 19272 | ...BASE | EA | 1 |
| 5 | 13 | XBOZZ | 4730-00-407-6440 | MS51953-25 | 96906 | ..NIPPLE | EA | 6 |
| 5 | 14 | PBOZZ | | 6-4300 | 19272 | ..VALVE,NEEDLE | EA | 1 |
| 5 | 15 | PAOFF | | 9-4300-7 | 19272 | ..MOTOR,AIR | EA | 1 |
| 5 | 16 | PAFZZ | 5305-00-912-7295 | MS35276-279 | 96906 | ...SCREW,END PLATE | EA | 12 |
| 5 | 17 | XAFZZ | | 20-5014 | 19272 | ...END PLATE,DRIVE | EA | 1 |
| 5 | 18 | XAFZZ | | 20-5016 | 19272 | ...END PLATE,DEAD | EA | 1 |
| 5 | 19 | PAFZZ | | 4-4344 | 19272 | ...GASKET,END PLATE | EA | 2 |
| 5 | 20 | XBFZZ | | 20-5040 | 19272 | ...CAP,END | EA | 1 |
| 5 | 21 | PAFZZ | | 4-4347 | 19272 | ...GASKET,END CAP | EA | 1 |
| 5 | 22 | PAFZZ | | 4-4340 | 19272 | ...SEAL,SHAFT | EA | 1 |
| 5 | 23 | PAFZZ | | 2-4340 | 19272 | ...BEARING | EA | 2 |
| 5 | 24 | XBFZZ | | 20-5021 | 19272 | ...ROTOR ASSY | EA | 1 |
| 5 | 25 | XBFZZ | | 20-5030 | 19272 | ...VANE | EA | 4 |
| 5 | 26 | XBFZZ | | 11-4317 | 19272 | ...PIN,DOWEL | EA | 4 |
| 5 | 27 | XAFZZ | | 20-5000 | 19272 | ...HOUSING | EA | 1 |
| 5 | 28 | XBFZZ | | 20-5994 | 19272 | ..SUPPORT,MOTOR | EA | 1 |
| 5 | 29 | XBFZZ | | 1-10-28-3 | 19272 | ..NUT | EA | 1 |
| 5 | 30 | XBFZZ | | 20-5991 | 19272 | ..WASHER,PACKING | EA | 1 |
| 5 | 31 | PAFZZ | | 4-4301-1 | 19272 | ..PACKING | EA | 1 |
| 5 | 32 | XBFZZ | | 20-5993 | 19272 | ..SHAFT,PROPELLER | EA | 1 |
| 5 | 33 | XBFZZ | | 20-4570-4 | 19272 | ..ADAPTER | EA | 1 |
| 5 | 34 | XBFZZ | | 11-4126 | 19272 | ..STRAINER,FLUID | EA | 1 |
| 5 | 35 | PBOZZ | 4820-00-289-4228 | 5-10-9 | 19272 | ..COCK,SHUTOFF | EA | 1 |
| 5 | 36 | PBOZZ | | 5-10-4 | 19272 | ..COCK,SHUTOFF | EA | 1 |
| 5 | 37 | PAOZZ | 6685-00-482-6230 | 6-4325-160 | 19272 | ..GAGE,PRESSURE,DIAL | EA | 2 |
| 5 | 38 | PAFZZ | | 11-5529 | 19272 | ..FILTER,AIR | EA | 1 |

| SECTION II (1) ILLUSTRATION | | (2) | (3) | (4) | (5) | (6) | (7) | (8) |
|-----------------------------------|------------|-------------|-----------------------------|----------------|-------|----------------------|--------------------|--------------------------|
| FIG NO | ITEM NO | SMR CODE | NATIONAL STOCK NUMBER | PART NUMBER | FSCM | DESCRIPTION | USABLE ON CODE U/M | QTY INC IN UNIT |
| 5 | 39 | XBFZZ | 4730-00-407-6440 | MS51953-25 | 96906 | ..NIPPLE | EA | REF |
| 5 | 40 | XBFZZ | | 5-03-222-8 | 19272 | ..TEE | EA | 3 |
| 5 | 41 | XBFZZ | 4730-00-407-6440 | MS51953-25 | 96906 | ..NIPPLE | EA | REF |
| 5 | 42 | XBFZZ | | 5-05-22-8 | 19272 | ..UNION | EA | 1 |
| 5 | 43 | XBFZZ | 4730-00-407-6440 | MS51953-25 | 96906 | ..NIPPLE | EA | REF |
| 5 | 44 | XBFZZ | | 5-02-22-8 | 19272 | ..STREET ELL | EA | 2 |
| 5 | 45 | PBFFF | | 6-4420 | 19272 | ..REGULATOR, PR | EA | 2 |
| 5 | 46 | XAFZZ | | 11-5642 | 19272 | ..PLUG, BOTTOM | EA | 1 |
| 5 | 47 | PCFZZ | 5330-00-840-6269 | MS29561-019 | 96906 | ...O RING | EA | 1 |
| 5 | 48 | XBFZZ | | 11-5640 | 19272 | ...SPRING | EA | 1 |
| 5 | 49 | PBFZZ | 5330-00-580-5939 | MS29561-009 | 96906 | ...O RING | EA | 1 |
| 5 | 50 | XAFZZ | | 11-5638 | 19272 | ..VALVE | EA | 1 |
| 5 | 51 | XAFZZ | | 5-07-22-8 | 19272 | ..PLUG, PIPE | EA | 1 |
| 5 | 52 | XAFZZ | | 11-5630 | 19272 | ...SCREW | EA | 4 |
| 5 | 53 | XAFZZ | | 11-5637 | 19272 | ...BODY | EA | 1 |
| 5 | 54 | PCFZZ | 5330-00-580-5937 | MS29561-008 | 96906 | ...O RING | EA | 1 |
| 5 | 55 | XAFZZ | | 11-5634 | 19272 | ...DIAPHRAGM ASSY | EA | 1 |
| 5 | 56 | XAFZZ | | 11-5633 | 19272 | ...SPRING | EA | 1 |
| 5 | 57 | XAFZZ | | 11-5632 | 19272 | ...DISC, PR | EA | 1 |
| 5 | 58 | XBFZZ | | 11-5628 | 19272 | ...SCREW, ADJUSTMENT | EA | 1 |
| 5 | 59 | XBFZZ | | 11-5629 | 19272 | ...NUT | EA | 1 |
| 5 | 60 | XAFZZ | | 11-5631 | 19272 | ...COVER | EA | 1 |
| 5 | 61 | XBOZZ | 4730-00-407-6440 | MS51953-25 | 96906 | ...NIPPLE | EA | REF |
| 5 | 62 | PBFFF | | 50-4581 | 19272 | ..VALVE ASSY, SLIDE | EA | 1 |
| 5 | 63 | XAFZZ | | 1-5100-68 | 19272 | ..STOP, SLIDE | EA | 1 |
| 5 | 64 | XAFZZ | | 20-4144 | 19272 | ..PISTON, SLIDE | EA | 1 |
| 5 | 65 | PCFZZ | | 4-4300-16 | 19272 | ...O RING | EA | 2 |
| 5 | 66 | XAFZZ | | 20-4143 | 19272 | ...BODY | EA | 1 |
| 5 | 67 | XBFZZ | | 5-03-222-8 | 19272 | ..TEE | EA | REF |
| 5 | 68 | XBOZZ | | MS51953-35 | 96906 | ..NIPPLE | EA | 2 |
| 5 | 69 | XBOZZ | 4730-00-407-6440 | MS51953-25 | 96906 | ..NIPPLE | EA | REF |
| 5 | 70 | XBOZZ | | 5-03-222-8 | 19272 | ...TEE | EA | REF |
| 5 | 71 | XBOZZ | 4730-00-196-1486 | MS51953-33 | 96906 | ..NIPPLE | EA | 2 |
| 5 | 72 | XBOZZ | | 5-02-22-8 | 19272 | ..STREET ELL | EA | REF |
| 5 | 73 | PBFFF | | 6-4420 | 19272 | ..REGULATOR, PR | EA | REF |
| 5 | 74 | XBOZZ | 4730-00-196-1486 | MS51953-33 | 96906 | ..NIPPLE | EA | REF |
| 5 | 75 | XBOZZ | | 5-06-2222-8 | 19272 | ..CROSS | EA | 1 |
| 5 | 76 | XBOZZ | | MS51953-35 | 96906 | ..NIPPLE | EA | REF |
| 5 | 77 | XBOZZ | | 5-01-33-8 | 19272 | ..ELBOW | EA | 1 |
| 5 | 78 | XBOZZ | | MS51953-57 | 96906 | ..NIPPLE | EA | 1 |

| SECTION II | | (2) | (3) | (4) | (5) | (6) | (7) | (8) |
|------------------|-------------|----------|-----------------------|-------------|-------|------------------|----------------|-----------------|
| (1) ILLUSTRATION | | | | | | | | |
| (A) FIG NO | (B) ITEM NO | SMR CODE | NATIONAL STOCK NUMBER | PART NUMBER | FSCM | DESCRIPTION | USABLE ON CODE | QTY INC IN UNIT |
| 5 | 79 | PBFZZ | 4820-00-893-9841 | 112C | | .. VALVE, SAFETY | EA | 1 |
| 5 | 80 | PAOZZ | 5330-00-253-2199 | 4-433C | 19272 | .. GASKET | EA | 1 |
| 5 | 81 | XBOZZ | | 50-6524 | 19272 | .. COVER ASSY | EA | 1 |
| 5 | 82 | XBOZZ | | 11-4351-1 | 19272 | .. PAIL | EA | 1 |
| 5 | 83 | XBOFF | | 50-5004 | 19272 | .. TANK | EA | 1 |
| 5 | 84 | XBOZZ | | 2C-311 | | .. SCREW, CLAMP | EA | 6 |
| 5 | 85 | XBOZZ | | 20-179 | | .. PIN | EA | 6 |
| 5 | 85 | XBOZZ | | 20-179 | | .. PIN | EA | 6 |
| 5 | 86 | XBOZZ | | 20-403 | | .. CLAMP | EA | 6 |

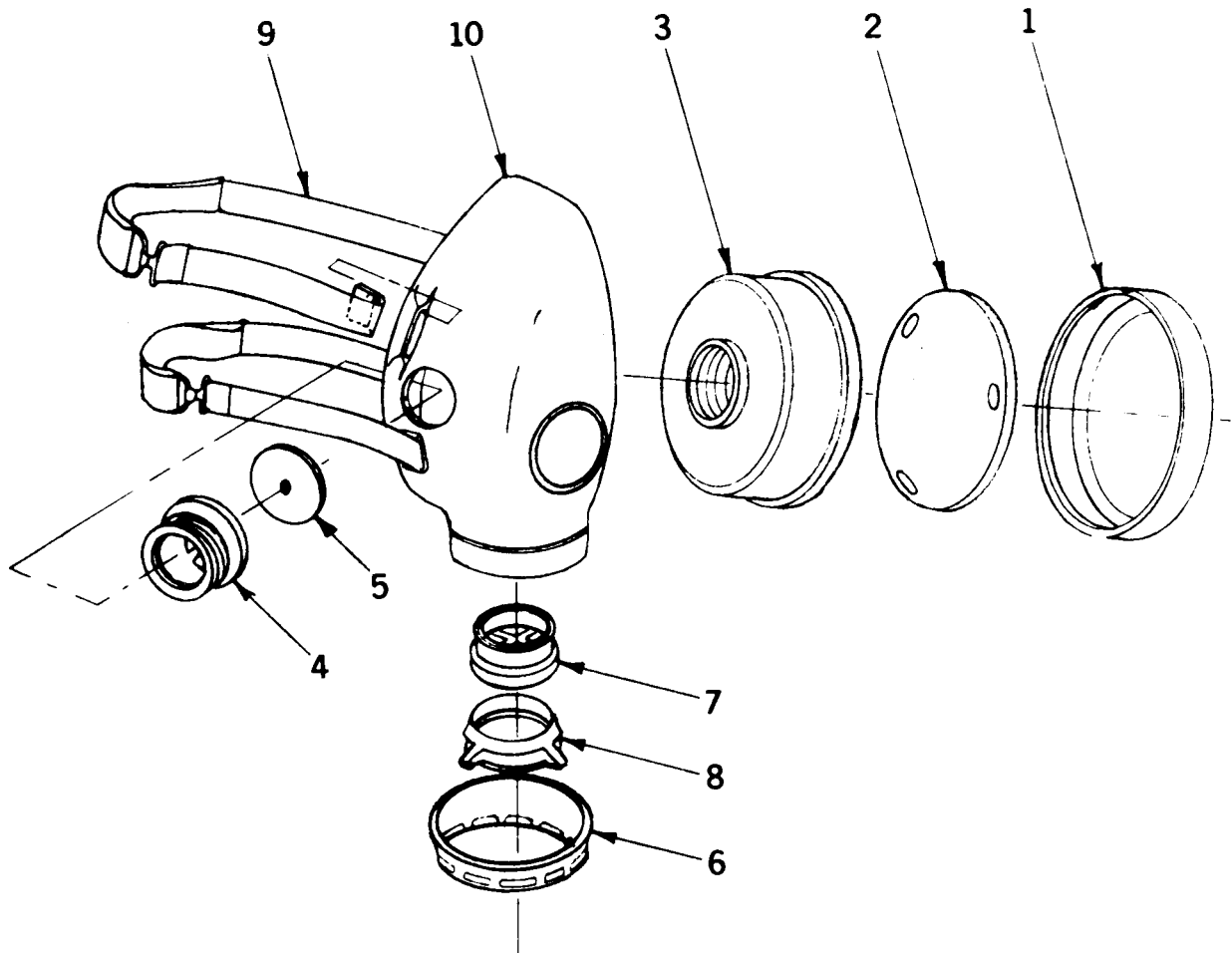


Figure 6. Respirator

| SECTION II (1) ILLUSTRATION | | (2) | (3) | (4) | (5) | (6) | (7) | (8) |
|-----------------------------------|------------|-------------|-----------------------------|----------------|-------|---------------------|--------------------|--------------------------|
| FIG NO | ITEM NO | SMR CODE | NATIONAL STOCK NUMBER | PART NUMBER | FSCM | DESCRIPTION | USABLE ON CODE U/M | QTY INC IN UNIT |
| | | | | | | GROUP 06 RESPIRATOR | | |
| 6 | | PAOOO | | 7531 | 79250 | RESPIRATOR | EA | 1 |
| 6 | 1 | XBOZZ | | 7500-26 | 79250 | .COVER, FILTER | EA | 2 |
| 6 | 2 | XBOZZ | | 7500-10 | 79250 | .PREFILTER | EA | 2 |
| 6 | 3 | XBOZZ | | 7500-1 | 79250 | .CARTRIDGE | EA | 2 |
| 6 | 4 | XAOZZ | | 7500-16 | 79250 | .CONN, INHALATION | EA | 2 |
| 6 | 5 | XBOZZ | | 7500-17 | 79250 | .VALVE, INHALATION | EA | 2 |
| 6 | 6 | XAOZZ | | 7500-20 | 79250 | .GUARD, VALVE | EA | 1 |
| 6 | 7 | XAOZZ | | 7500-18 | 79250 | .VALVE, EXHALATION | EA | 1 |
| 6 | 8 | XAOZZ | | 7500-19 | 79250 | .SEAT, VALVE | EA | 1 |
| 6 | 9 | XAOZZ | | 7500-12 | 79250 | .HEADBAND SET | EA | 1 |
| 6 | 10 | XAOZZ | | 7500-11 | 79250 | .FACEPIECE | EA | 1 |

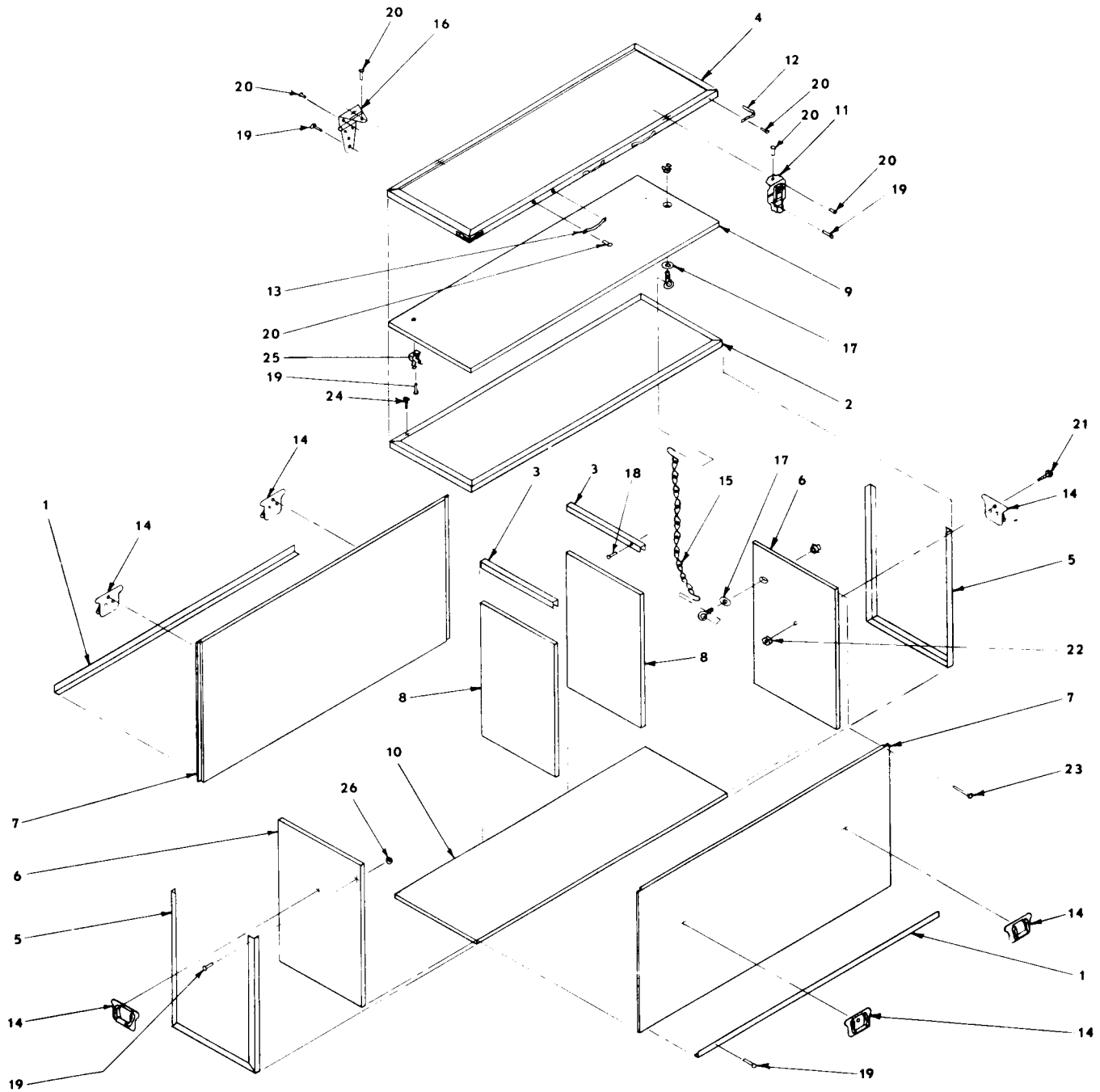


Figure 7. Chest, Spray Outfit

| SECTION II | | | | | TM5-1940-228-34P | | |
|--------------|------|----------|------------------|-------|-----------------------------|----------------|------|
| (1) | (2) | (3) | (4) | (5) | (6) | (7) | (8) |
| ILLUSTRATION | | NATIONAL | PART | FSCM | DESCRIPTION | USABLE ON CODE | QTY |
| (A) | (B) | STOCK | NUMBER | | | | INC |
| FIG | ITEM | NUMBER | | | | | IN |
| NO | NO | | | | | | UNIT |
| | | SMR | | | | | |
| | | CODE | | | | | |
| | | PAOZZ | 50-6618 | 19272 | GROUP 07 CEST, SPRAY OUTFIT | | |
| 7 | | PAOZZ | 50-6618 | 19272 | CHEST, SPRAY OUTFIT | EA | 1 |
| 7 | 1 | XBFFF | 20-6027 | 19272 | .BINDING, BOTTOM | EA | 2 |
| 7 | 2 | XBFFF | 20-6028 | 19272 | .BINDING, EDGE | EA | 1 |
| 7 | 3 | XBFFF | 20-6029 | 19272 | .BINDING, PARTITION | EA | 2 |
| 7 | 4 | XBFFF | 20-6030 | 19272 | .BINDING, COVER | EA | 1 |
| 7 | 5 | XBFFF | 20-6026 | 19272 | .BINDING, CORNER | EA | 2 |
| 7 | 6 | XBFFF | 11-6102 | 19272 | .PANEL, SIDE | EA | 2 |
| 7 | 7 | XBFFF | 11-6103 | 19272 | .PANEL, FRONT, REAR | EA | 2 |
| 7 | 8 | XBFZZ | 11-6104 | 19272 | .PARTITION | EA | 2 |
| 7 | 9 | XBFZZ | 11-6114 | 19272 | .PANEL, COVER | EA | 1 |
| 7 | 10 | XBFZZ | 11-6101 | 19272 | .PANEL, BOTTOM | EA | 1 |
| 7 | 11 | PAFZZ | 20-6032 | 19272 | .DRAWBOLT | EA | 4 |
| 7 | 12 | XBFZZ | 20-6033 | 19272 | .PULL, CORNER COVER | EA | 2 |
| 7 | 13 | XBFZZ | 20-6034 | 19272 | .PULL, COVER | EA | 3 |
| 7 | 14 | PAFZZ | 20-6035 | 19272 | .HANDLE | EA | 6 |
| 7 | 15 | PAFZZ | 20-6036 | 19272 | .CHAIN, COVER | EA | 2 |
| 7 | 16 | PAFZZ | 5340-00-240-2584 | 96906 | .HINGE | EA | 4 |
| 7 | 17 | XBFZZ | 1-20-06-3 | 19272 | .WASHER, EYEBOLT | EA | 2 |
| 7 | 18 | PAFZZ | 11-6113 | 19272 | .RIVER 1/16 TUBULAR | EA | 64 |
| 7 | 19 | PAFZZ | 11-6117 | 19272 | .RIVET 9/64 TUBULAR | EA | 180 |
| 7 | 20 | PAFZZ | 11-6116 | 19272 | .RIVER 5/32 FH | EA | 36 |
| 7 | 21 | PAFZZ | 11-6119 | 19272 | .SCREW, 1/4-20 | EA | 18 |
| 7 | 22 | PAFZZ | 5310-00-250-9477 | 96906 | .NUT, 1/4-20 | EA | 18 |
| 7 | 23 | PAFZZ | 5315-00-162-3151 | 81348 | .NAIL, 4D COATED | EA | 96 |
| 7 | 24 | PAFZZ | 5305-00-939-9234 | 81348 | .SCREW, #5X1, WOOD, RH | EA | 48 |
| 7 | 25 | PAFZZ | 20-6044 | 19272 | .CLIP, TUBULAR | EA | 3 |
| 7 | 26 | XBFZZ | 1-20-30-3 | 19272 | .WASHER, FLAT | EA | 60 |

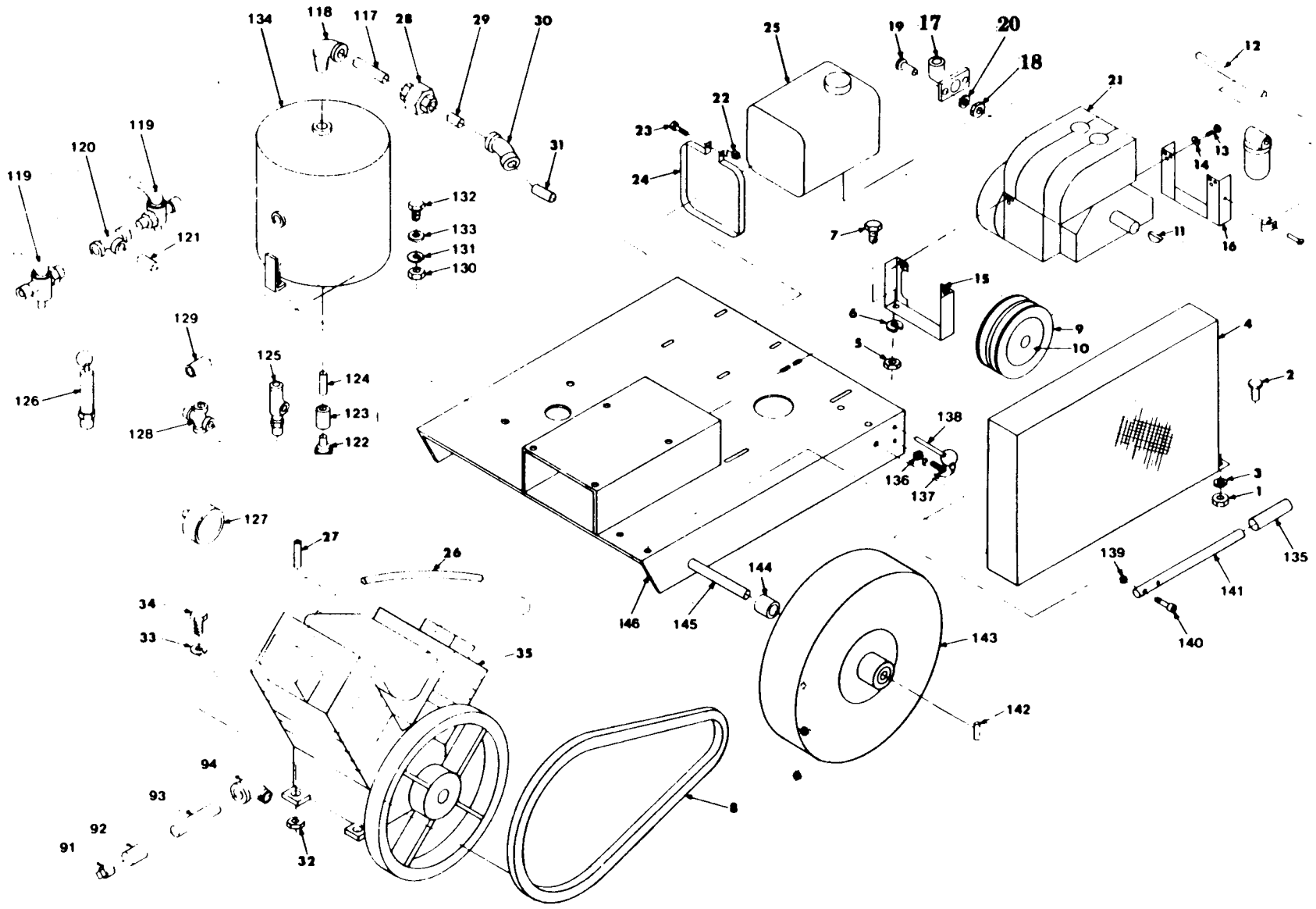


Figure B. Compressor Assembly
(Sheet 1 of 5)

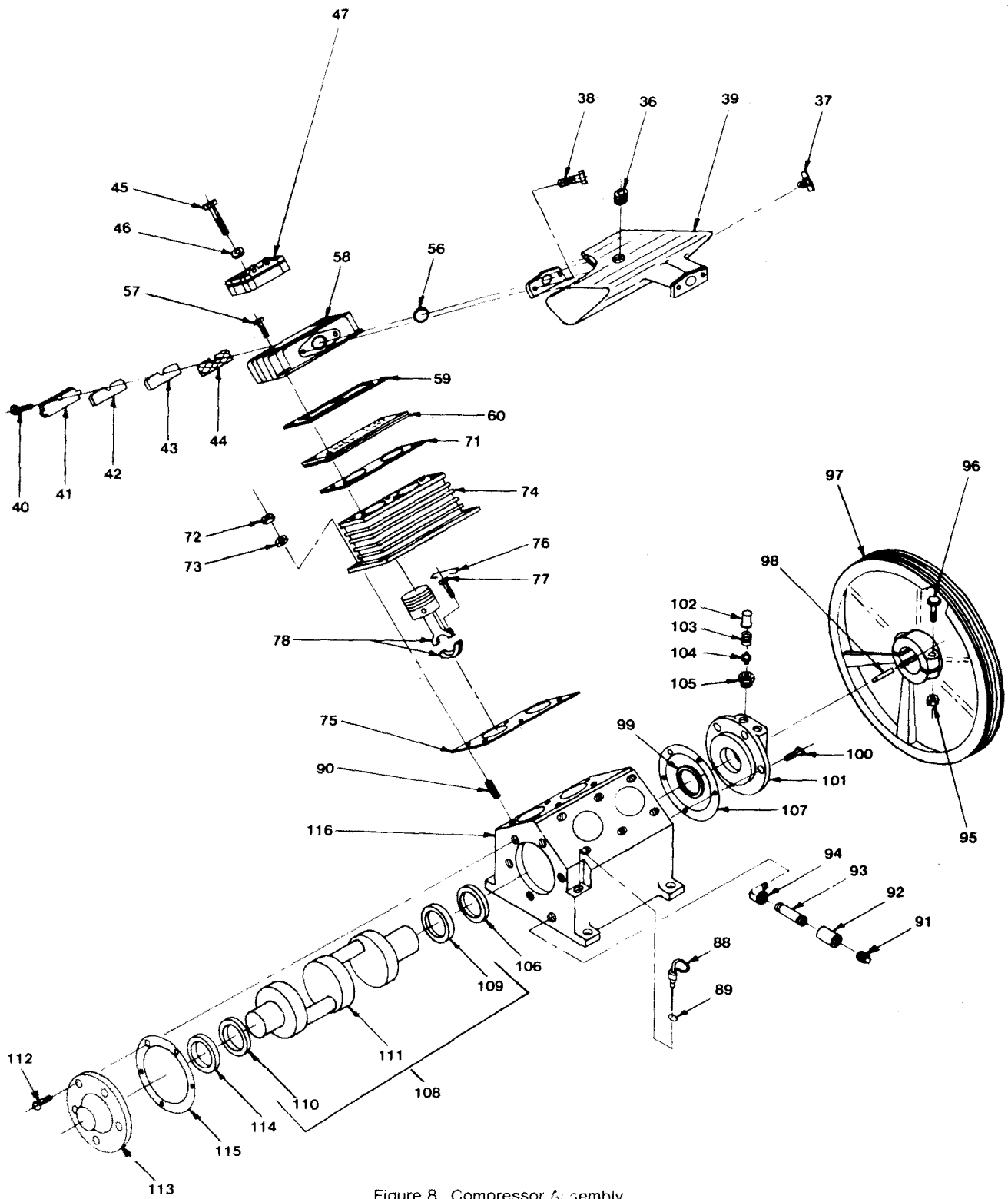


Figure 8. Compressor Assembly
(Sheet 2 of 5)

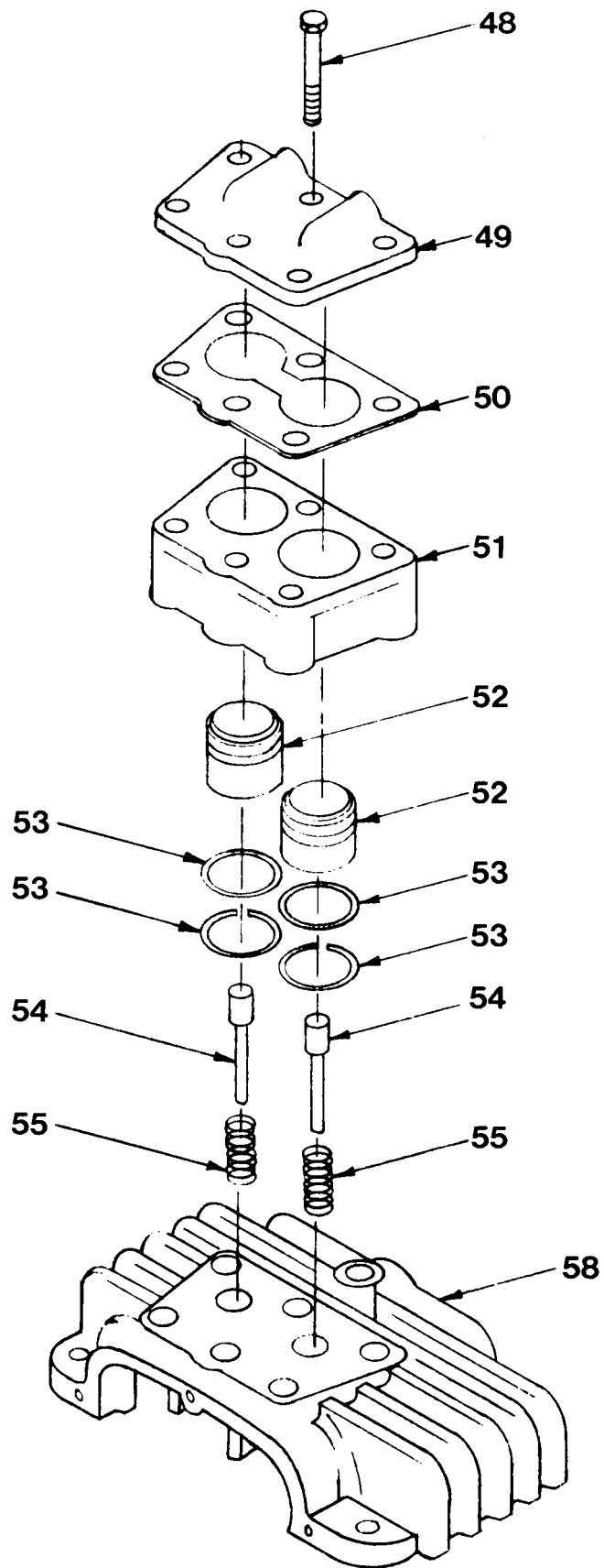


Figure 8. Compressor Assembly (Sheet 3 of 5)

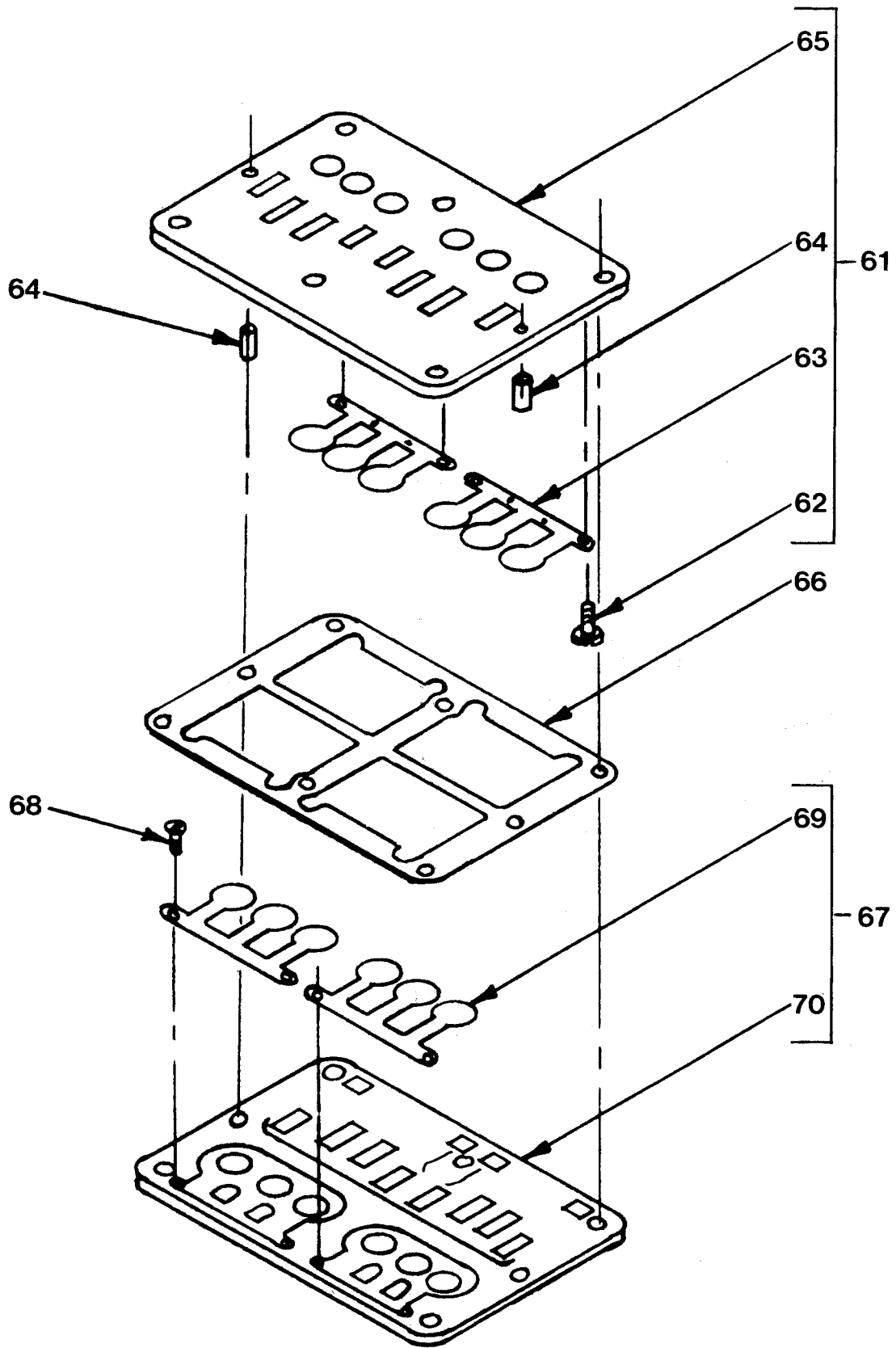


Figure 8. Compressor Assembly
(Sheet 4 of 5)

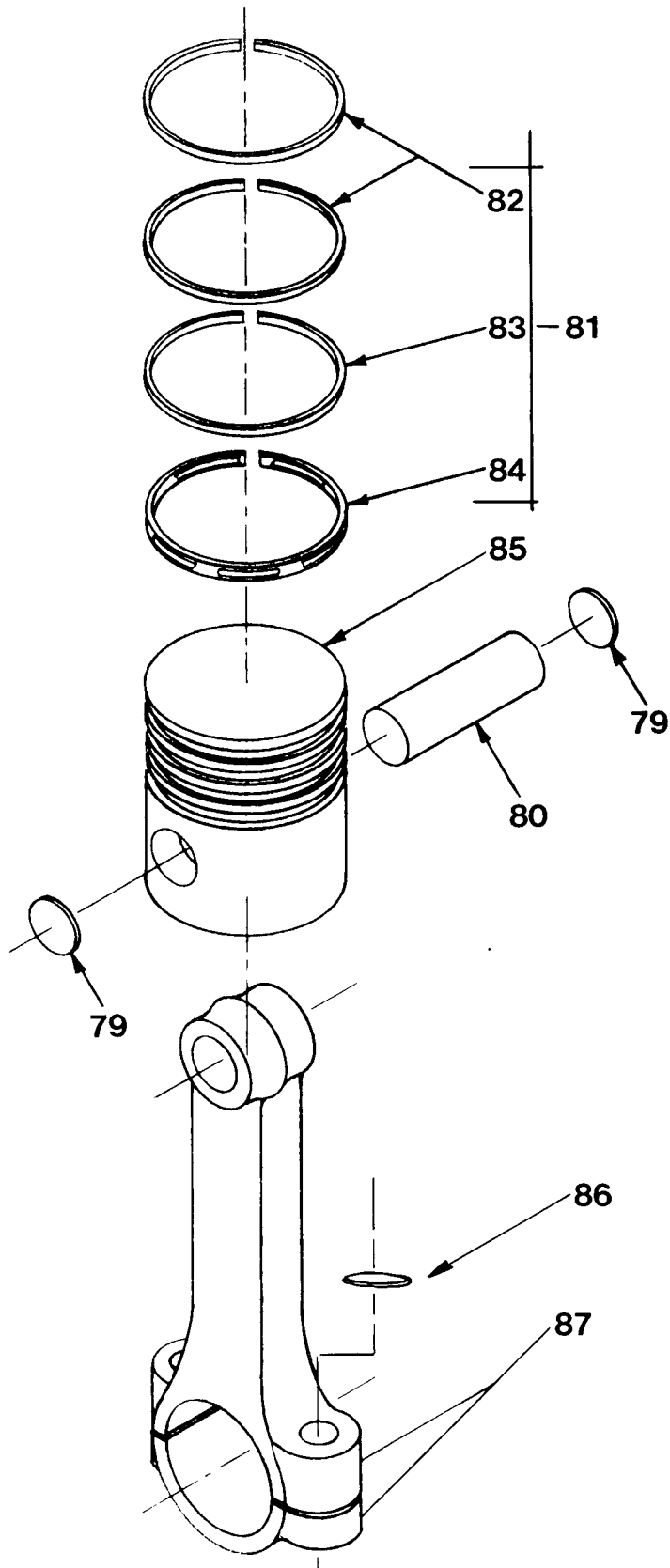


Figure 8. Compressor Assembly (Sheet 5 of 5)

| SECTION II (1) ILLUSTRATION | | (2) | (3) | (4) | (5) | (6) | (7) | (8) |
|-----------------------------------|------------|-------------|-----------------------------|----------------|-------|------------------------|--------------------|--------------------------|
| FIG NO | ITEM NO | SMR CODE | NATIONAL STOCK NUMBER | PART NUMBER | FSCM | DESCRIPTION | USABLE ON CODE U/M | QTY INC IN UNIT |
| GROUP 08 COMPRESSOR ASSEMBLY | | | | | | | | |
| 8 | | XBCFF | | 50-6624 | 19272 | .COMPRESSOR ASSEMBLY | EA | 1 |
| 8 | 1 | PAOZZ | 5310-00-250-9477 | MS35649-2254 | 96906 | .NUT, 1/4-20 | EA | 4 |
| 8 | 2 | PAOZZ | 5305-00-719-3997 | MS35307-303 | 96906 | .BOLT, 1/4-20X1/2 | EA | 2 |
| 8 | 3 | PAOZZ | 5310-00-933-8121 | MS35338-139 | 96906 | .WASHER, 1/4 | EA | 4 |
| 8 | 4 | XBOFF | | 20-6054 | 19272 | .GUARD, BELT | EA | 1 |
| 8 | 5 | PAOZZ | 5310-00-913-8881 | MS51971-3 | 96906 | .NUT, 3/8-16 | EA | 4 |
| 8 | 6 | PAOZZ | 5310-00-984-7042 | MS35338-141 | 96906 | .WASHER, LOCK, 3/8 | EA | 4 |
| 8 | 7 | PAOZZ | 5305-00-576-5417 | MS35307-360 | 96906 | .BOLT, 3/8-16X1 | EA | 4 |
| 8 | 8 | PAOZZ | | A58 | 71176 | .BELT | EA | 2 |
| 8 | 9 | XBFZZ | | 2BK5CH | 7116 | .SHEAVE | EA | 1 |
| 8 | 10 | XBFZZ | | H-3/4 | 71176 | .BUSHING | EA | 1 |
| 8 | 11 | PAFZZ | 5315-00-616-5514 | MS35756-6 | 96906 | .KEY, WOODRUFF | EA | 1 |
| 8 | 12 | PAFZZ | | 20-6060 | 19272 | .TUBE ASSEMBLY, METAL | EA | 1 |
| 8 | 13 | PAOZZ | 5305-00-719-3997 | MS35307-303 | 96906 | .BOLT, 1/4-20X1/2 | EA | 12 |
| 8 | 14 | PAOZZ | 5310-00-933-8121 | MS35338-139 | 96906 | .WASHER, LOCK, 1/4 | EA | 12 |
| 8 | 15 | XBFZZ | | 20-6058 | 19272 | .MOUNT, ENGINE FRONT | EA | 1 |
| 8 | 16 | XBFZZ | | 20-6057 | 19272 | .MOUNT, ENGINE REAR | EA | 1 |
| 8 | 17 | XBFZZ | | 20-6059 | 19272 | .DEFLECTOR, EXHAUST | EA | 1 |
| 8 | 18 | PAFZZ | 5310-00-250-9477 | MS35649-2254 | 96906 | .NUT, 1/4-20 | EA | 2 |
| 8 | 19 | PAFZZ | 5305-00-207-8253 | MS35307-308 | 96906 | .BOLT, 1/4-20X1 | EA | 2 |
| 8 | 20 | PAFZZ | 5310-00-933-8121 | 1-21-10-3 | 19272 | .WASHER, LOCK, 1/4 | EA | 12 |
| 8 | 21 | PAFFF | 2805-00-072-4871 | 2AC16-3 | 97403 | .ENGINE, GASOLINE | EA | 1 |
| 8 | 22 | PAFZZ | 5310-00-826-8965 | 22NU04C | 72962 | .NUT, 1/4-20 | EA | 2 |
| 8 | 23 | PAFZZ | 5305-00-721-8010 | MS35307-314 | 96906 | .SCREW, CAP, HEXAGON H | EA | 2 |
| 8 | 24 | XBFZZ | | 11-6137 | 19272 | .STRAP, MOUNTING | EA | 2 |
| 8 | 25 | XBFFF | | 434 | 00165 | .TANK, GASOLINE, 2GAL | EA | 1 |
| 8 | 26 | XBFFF | | 20-6061 | 19272 | .LINE, UNLOADER | EA | 1 |
| 8 | 27 | XBFFF | | 20-6062 | 19272 | .LINE, PILOT | EA | 1 |
| 8 | 28 | XBFZZ | | 5-C5-55-8 | 19272 | .UNION 3/4 | EA | 1 |
| 8 | 29 | XBFZZ | 4730-00-196-1468 | MS51953-97 | 96906 | .NIPPLE 3/4X1 3/8 | EA | 1 |
| 8 | 30 | XBFZZ | | 5-C1-55-8 | 19272 | .ELBOW, 45, 3/4 | EA | 1 |
| 8 | 31 | XBFZZ | | MS-51953-97 | 96906 | .NIPPLE, 3/4X1 3/8 | EA | 1 |
| 8 | 32 | PAFZZ | 5310-00-913-8881 | MS51971-3 | 96906 | .NUT, 3/8-16 | EA | 4 |
| 8 | 33 | PAFZZ | 5310-00-984-7042 | MS35338-141 | 96906 | .WASHER, LOCK, 3/8 | EA | 4 |
| 8 | 34 | PAFZZ | 5305-00-021-3740 | MS35307-364 | 96906 | .BOLT, 3/8-16X1 1/2 | EA | 4 |
| 8 | 35 | PBFFH | | V-230 | 01605 | .COMPRESSOR, AIR | EA | 1 |
| 8 | 36 | XBOZZ | | 1923 | 01605 | ..PLUG, PIPE | EA | 2 |
| 8 | 37 | PBOZZ | | 1459 | 01605 | ..COCK, DRAIN | EA | 1 |
| 8 | 38 | XBFZZ | | 2136 | 01605 | ..BOLT, MOUNTING | EA | 4 |

| SECTION II (1) ILLUSTRATION | | (2) | (3) | (4) | (5) | (6) | (7) | (8) |
|-----------------------------------|-------------------|-------------|-----------------------------|----------------|-------|-------------------------|----------------|--------------------------|
| (A) FIG NO | (B) ITEM NO | SMR CODE | NATIONAL STOCK NUMBER | PART NUMBER | FSCM | DESCRIPTION | USABLE ON CODE | U/M INC IN UNIT |
| 8 | 39 | XBFZZ | | 2099 | 01605 | ..TANK,PULSATION | EA | 1 |
| 8 | 40 | PAOZZ | 5305-00-995-3444 | MS35207-266 | 96906 | ..SCREW,FILTER | EA | 3 |
| 8 | 41 | XBOZZ | | 21C4 | 01605 | ..RETAINER,FILTER | EA | 1 |
| 8 | 42 | PAOZZ | | 2128 | 01605 | ..ELEMENT,FILTER,OUT | EA | 1 |
| 8 | 43 | PAOZZ | | 2129 | 01605 | ..ELEMENT,FILTER,IN | EA | 1 |
| 8 | 44 | PAOZZ | | 2130 | 01605 | ..SCREEN,FILTER | EA | 1 |
| 8 | 45 | XBFZZ | | 2132 | 01605 | ..BOLT,HEAD LONG | EA | 1 |
| 8 | 46 | XBFZZ | | 1244 | 01605 | ..WASHER,GASKET | EA | 1 |
| 8 | 47 | XBFHH | | 2160 | 01605 | ..UNLOADER ASSY | EA | 1 |
| 8 | 48 | XBFZZ | | 2170 | 01605 | ...BOLT,COVER | EA | 5 |
| 8 | 49 | XBFZZ | | 2106 | 01605 | ...COVER,UNLOADER | EA | 1 |
| 8 | 50 | PAFZZ | | 2113 | 01605 | ...GASKET,COVER | EA | 1 |
| 8 | 51 | XBFZZ | | 2105 | 01605 | ...BODY,UNLOADER | EA | 1 |
| 8 | 52 | XBFZZ | | 2107 | 01605 | ...PISTON,UNLOADER | EA | 2 |
| 8 | 53 | PBFZZ | 5330-00-690-9594 | MS29561-210 | 96906 | ...O RING,PISTON | EA | 4 |
| 8 | 54 | XBFZZ | | 2159 | 01605 | ...PLUNGER,UNLOADER | EA | 2 |
| 8 | 55 | XBFZZ | | 2097 | 01605 | ...SPRING,PLUNGER | EA | 2 |
| 8 | 56 | PAFZZ | 5330-00-618-2517 | MS29561-214 | 96906 | ..O RING | EA | 1 |
| 8 | 57 | XBFZZ | | 1174 | 01605 | ..BOLT,HEAD,SHORT | EA | 4 |
| 8 | 58 | XBFHH | | 2148 | 01605 | ..HEAD | EA | 1 |
| 8 | 59 | PAFZZ | | 2138 | 01605 | ..GASKET, TOP | EA | 1 |
| 8 | 60 | XBFZZ | | 2143 | 01605 | ..PLATE ASSY, VALVE | EA | 1 |
| 8 | 61 | XBFHH | | 2157 | 01605 | ...PLATE ASSY, TOP | EA | 1 |
| 8 | 62 | XBHZZ | | 2057 | 01605 |SCREW, REED VALVE | EA | 4 |
| 8 | 63 | XBFZZ | | 2035 | 01605 |VALVE, REED, INTAKE | EA | 2 |
| 8 | 64 | XBHZZ | | 2023 | 01605 |PIN, VALVE PLATE | EA | 2 |
| 8 | 65 | XBHZZ | | 2149 | 01605 |PLATE, TOP | EA | 1 |
| 8 | 66 | PAFZZ | | 2058 | 01605 | ...GASKET, MIDDLE | EA | 1 |
| 8 | 67 | PAFHH | | 2158 | 01605 | ...PLATE ASSY, BOTTOM | EA | 1 |
| 8 | 66 | XBHZZ | | 2057 | 01605 |SCREW, REED VALVE | EA | 4 |
| 8 | 69 | PBFZZ | | 2036 | 01605 |VALVE, REED, DISCH | EA | 2 |
| 8 | 70 | XBHZZ | | 2037 | 01605 |PLATE, BOTTOM | EA | 1 |
| 8 | 71 | PAHZZ | | 1316 | 01605 | ..GASKET, BOTTOM | EA | 1 |
| 8 | 72 | XBFZZ | | 1978 | 01605 | ..NUT, CYLINDER | EA | 6 |
| 8 | 73 | XBFZZ | | 1353 | 01605 | ..LOCKWASHER | EA | 6 |
| 8 | 74 | XBHZZ | | 1394 | 01605 | ..CYLINDER | EA | 1 |
| 8 | 75 | XBHZZ | | 1404 | 01605 | ..GASKET, CYLINDER | EA | 2 |
| 8 | 76 | XBHZZ | | 1537 | 01605 | ..WIRE, CON ROD | EA | 1 |
| 8 | 77 | XBHZZ | | 1524 | 01605 | ..BOLT, CON ROD | EA | 2 |
| 8 | 78 | XBHHH | | 1548 | 01605 | ..PISTON ASSY | EA | 2 |

| SECTION II (1) ILLUSTRATION | | (2) | (3) | (4) | (5) | (6) | (7) | (8) |
|-----------------------------------|------------|-------------|-----------------------------|----------------|-------|------------------------|----------------|--------------------------|
| FIG NO | ITEM NO | SMR CODE | NATIONAL STOCK NUMBER | PART NUMBER | FSCM | DESCRIPTION | USABLE ON CODE | QTY INC IN UNIT |
| 8 | 79 | XBHZZ | | 1210-2 | 01605 | ...PLUG,PISTON PIN | | EA 2 |
| 8 | 80 | XBHZZ | | 1319 | 01605 | ...PIN,PISTON | | EA 1 |
| 8 | 81 | PBHZZ | | 1549 | 01605 | ...RING SET | | EA 1 |
| 8 | 82 | XAHZZ | | 1533 | 01605 | ...RING,COMP,EDGE UP | | EA 2 |
| 8 | 83 | XAHZZ | | 1534 | 01605 | ...RING,COMP,GROOVE DN | | EA 1 |
| 8 | 84 | XAHZZ | | 1321 | 01605 | ...RING,OIL | | EA 1 |
| 8 | 85 | XAHZZ | | 1460 | 01605 | ...PISTON | | EA 1 |
| 8 | 86 | XBHZZ | | 1227 | 01605 | ...WASHER,CON ROD | | EA 2 |
| 8 | 87 | XBHZZ | | 1399 | 01605 | ...ROD CONNECTING | | EA 1 |
| 8 | 88 | XBOZZ | | 1521 | 01605 | ..STICK,DIP | | EA 1 |
| 8 | 89 | XBOZZ | | 1265 | 01605 | ..O RING | | EA 1 |
| 8 | 90 | PAFZZ | | 1970 | 01605 | ..STUD,5/16 X 1 5/16 | | EA 12 |
| 8 | 91 | XBOZZ | | 1111 | 01605 | ..PLUG,OIL DRAIN 1/4 | | EA 1 |
| 8 | 90 | XBFZZ | | 5-04-22-8 | 19272 | ..COUPLING,PIPE 1/4 | | EA 1 |
| 8 | 93 | XBFZZ | 4730-00-196-1486 | MS51953-33 | 96906 | ..NIPPLE,PIPE 1/4 | | EA 1 |
| 8 | 94 | XBFZZ | | 5-02-22-8 | 19272 | ..ELBOW,STREET 1/4 | | EA |
| 8 | 95 | XBFZZ | | 1379 | 01605 | ..NUT,PULLEY CLAMP | | EA 2 |
| 8 | 96 | XBFZZ | | 13 3 | 01605 | ..BOLT, PULLEY CLAMP | | EA 2 |
| 8 | 97 | XBFZZ | | 1390 | 01605 | ..PULLEY,2 GROOVE | | EA 1 |
| 8 | 98 | XBFZZ | | 1382 | 01605 | ..KEY,PULLEY | | EA 1 |
| 8 | 99 | PAFZZ | 5330-00-207-8975 | 45C245 | 11614 | ..SEAL,OIL | | EA 1 |
| 8 | 100 | PAFZZ | 5305-00-753-4322 | MS51095-334 | 96906 | ..SCREW,HEX CAP | | EA 5 |
| 8 | 101 | PAFZZ | | 1397 | 01605 | ..CARRIER,BEARING | | EA 1 |
| 8 | 102 | XBOZZ | | 1358 | 01605 | ..CAP,BEATHER | | EA 2 |
| 8 | 103 | XBOZZ | | 1291 | 01605 | ..SPRING,BREATHER | | EA 2 |
| 8 | 104 | PAOZZ | | 1153 | 01605 | ..VALVE,BREATHER | | EA 2 |
| 8 | 105 | XBFZZ | | 1357 | 01605 | ..SEAT,BREATHER | | EA 2 |
| 8 | 106 | PAFZZ | | LM67C10 | 01605 | ..CUP,BEARING | | EA 1 |
| 8 | 107 | PAFZZ | | 14C3 | 01605 | ..GASKET,CARRIER | | EA 3 |
| 8 | 108 | XBHZZ | | 1430 | 01605 | ..CRANKSHAFT ASSY | | EA 1 |
| 8 | 109 | PAFZZ | | LM67C48 | 01605 | ..CONE,BEARING | | EA 1 |
| 8 | 110 | PAFZZ | | L44649 | 01605 | ..CONE,BEARING | | EA 1 |
| 8 | 111 | XBHZZ | | 1400 | 01605 | ..CRANKSHAFT | | EA 1 |
| 8 | 112 | PAFZZ | 5305-00-753-4322 | MS51095-334 | 96906 | ..SCREW,CAP, HEX | | EA 5 |
| 8 | 113 | XBFZZ | | 1396 | 01605 | ..CARRIER,BEARING | | EA 1 |
| 8 | 114 | PAFZZ | | L44610 | 01605 | ..CUP,BEARING | | EA 1 |
| 8 | 115 | PAFZZ | | 1402 | 01605 | ..GASKET,CARRIER | | EA 3 |
| 8 | 116 | XBHZZ | | 1398 | 01605 | ..CRANKCASE | | EA 1 |
| 8 | 117 | XBFZZ | 4730-00-196-1497 | MS51953-102 | 96906 | ..NIPPLE,3/4X2 1/2 | | EA 1 |
| 8 | 118 | XBFZZ | | 5-02-55-3 | 19272 | ..ELBOW,STREET 3/4PT | | EA 1 |

| SECTION II (1) ILLUSTRATION | | (2) | (3) | (4) | (5) | (6) | (7) | (8) |
|-----------------------------------|-------------------|-------------|-----------------------------|----------------|-------|----------------------|----------------|--------------------------|
| (A) FIG NO | (B) ITEM NO | SMR CODE | NATIONAL STOCK NUMBER | PART NUMBER | FSCM | DESCRIPTION | USABLE ON CODE | U/M INC IN UNIT |
| 8 | 119 | PAOZZ | | 5-10-4 | 19272 | .COCK,SHUTOFF | EA | 2 |
| 8 | 120 | XBFZZ | | 5-03-222-8 | 19272 | .TEE,1/4NPT | EA | 1 |
| 8 | 121 | XBFZZ | 4730-00-407-6440 | MS51953-25 | 96906 | .NIPPLE,CLOSE 1/4NPT | EA | 1 |
| 8 | 122 | PAOZZ | | 1459 | 01605 | .COCK,DRAIN 1/4NPT | EA | 1 |
| 8 | 123 | XBFZZ | | 5-04-22-8 | 19272 | .COUPLING | EA | 1 |
| 8 | 124 | XBFZZ | 4730-00-407-6440 | MS51953-25 | 96906 | .NIPPLE 1/4 CLOSE | EA | 1 |
| 8 | 125 | PBOFF | | 625T | 75336 | .VALVE,PILOT,65-80 | EA | 1 |
| 8 | 126 | PAOZZ | 4820-00-893-9841 | 112C | 75336 | .VALVE,SAFETY,100PSI | EA | 1 |
| 8 | 127 | PAOZZ | | 6-4348-200 | 19272 | .GUAGE,0-200PSIG | EA | 1 |
| 8 | 128 | XBFZZ | | 5-06-2222-8 | 19272 | .CROSS,1/4NPT | EA | 1 |
| 8 | 129 | XBFZZ | 4730-00-407-6440 | MS51953-25 | 96906 | .NIPPLE,CLOSE 1/4NPT | EA | 1 |
| 8 | 130 | PAFZZ | 5310-00-913-8881 | MS51971-3 | 96906 | .NUT,3/8-16 | EA | 3 |
| 8 | 131 | PAFZZ | 5310-00-984-7042 | MS35338-141 | 96906 | .WASHER,LOCK,3/8 | EA | 3 |
| 8 | 132 | PAFZZ | 5305-00-021-3740 | MS35307-364 | 96906 | .BOLT,3/8-16X1 1/2 | EA | 3 |
| 8 | 133 | PAFZZ | 5310-00-773-7618 | MS15795-814 | 96906 | .WASHER,FLAT,3/8 | EA | 3 |
| 8 | 134 | XBFZZ | | 50-6634 | 19272 | .CHAMBER,PULSATION | EA | 1 |
| 8 | 135 | XBFZZ | | 11-6138 | 19272 | .GRIP,HANDLE | EA | 2 |
| 8 | 136 | PAFZZ | 5310-00-941-6019 | MS21083N08 | 96906 | .NUT,8-32 | EA | 2 |
| 8 | 137 | PAFZZ | 5305-00-942-8431 | MS35275-245 | 96906 | .SCREW | EA | 2 |
| 8 | 138 | XBFZZ | | 11-6139 | 19272 | .PIN,DETENT | EA | 2 |
| 8 | 139 | PAFZZ | 5310-00-826-8965 | 22NU040 | 72962 | .NUT,1/4-20 | EA | 2 |
| 8 | 140 | XBFZZ | | 1-4375 | 19272 | .SCREW,SHOULDER | EA | 2 |
| 8 | 141 | XBFZZ | | 20-6056 | 19272 | .HANDLE | EA | 2 |
| 8 | 142 | XBFZZ | | 1-4376 | 19272 | .PIN,ROLL 3/16X1 1/2 | EA | 2 |
| 8 | 143 | XBOFF | | 203437410 | 80557 | .WHEEL ASSY | EA | 2 |
| 8 | 144 | XBFZZ | | 20-6066 | 19272 | .SPACER,WHEEL | EA | 2 |
| 8 | 145 | XBFZZ | | 20-6055 | 19272 | .AXLE | EA | 1 |
| 8 | 146 | XBFZZ | | 20-6637 | 19272 | .PLATFORM | EA | 1 |

SECTION IV. NATIONAL STOCK NUMBER AND PART NUMBER INDEX

| STOCK NUMBER | FIGURE NO | ITEM NO | STOCK NUMBER | FIGURE NO | ITEM NO |
|------------------|-----------|---------|------------------|-----------|---------|
| 5305-00-021-3740 | 8 | 34 | 5330-00-618-2517 | 8 | 56 |
| 5305-00-021-3740 | 8 | 132 | 5330-00-690-9594 | 8 | 53 |
| 2805-00-072-4871 | 8 | 21 | 5305-00-719-5997 | 8 | 2 |
| 5315-00-162-3151 | 7 | 23 | 5305-00-719-5997 | 8 | 13 |
| 4730-00-196-1468 | 8 | 29 | 5305-00-721-8010 | 8 | 23 |
| 4730-00-196-1486 | 5 | 71 | 5305-00-753-4322 | 8 | 100 |
| 4730-00-196-1486 | 5 | 74 | 5305-00-753-4322 | 8 | 112 |
| 4730-00-156-1486 | 8 | 93 | 5310-00-773-7618 | 8 | 133 |
| 4730-00-196-1497 | 8 | 117 | 5310-00-826-8965 | 8 | 22 |
| 5305-00-207-8253 | 8 | 29 | 5310-00-826-8965 | 8 | 139 |
| 5330-00-207-8975 | 8 | 99 | 5330-00-840-6269 | 5 | 47 |
| 5340-00-240-2584 | 7 | 26 | 4820-00-898-9841 | 5 | 79 |
| 5310-00-250-9477 | 7 | 22 | 4820-00-893-9841 | 8 | 126 |
| 5310-00-250-9477 | 8 | 1 | 5305-00-912-7295 | 5 | 16 |
| 5310-00-250-9477 | 8 | 28 | 5310-00-913-8881 | 8 | 5 |
| 5330-00-253-2199 | 5 | 50 | 5310-00-913-8881 | 8 | 32 |
| 4940-00-261-8413 | 1 | | 5310-00-913-8881 | 8 | 130 |
| 5330-00-285-7384 | 1 | 14 | 5310-00-933-8121 | 8 | 3 |
| 5330-00-285-7384 | 1 | 25 | 5310-00-933-8121 | 8 | 14 |
| 5330-00-285-7384 | 1 | 33 | 5310-00-933-8121 | 8 | 20 |
| 4820-00-289-4228 | 5 | 33 | 5305-00-939-9234 | 7 | 24 |
| 4730-00-407-6440 | 5 | 23 | 5310-00-914-8019 | 8 | 136 |
| 4730-00-407-6440 | 5 | 59 | 5305-00-942-8432 | 8 | 137 |
| 4730-00-407-6440 | 5 | 41 | 5310-00-984-7042 | 8 | 6 |
| 4730-00-407-6440 | 5 | 43 | 5310-00-984-7042 | 8 | 33 |
| 4730-00-407-6440 | 5 | 61 | 5310-00984-7042 | 8 | 131 |
| 4730-00-407-6440 | 5 | 69 | 5305-00-995-3444 | 8 | 40 |
| 4730-00-407-6440 | 8 | 121 | 4940-01-074-5164 | 1 | |
| 4730-00-407-6440 | 8 | 124 | 4820-01-091-1458 | 1 | 17 |
| 4730-00-407-6440 | 8 | 129 | 5330-01-091-3932 | 1 | 30 |
| 6685-00-492-6230 | 5 | 37 | 5330-01-091-7693 | 1 | 27 |
| 5305-00-576-5417 | 8 | 7 | 5330-01-092-0258 | 1 | 19 |
| 5330-00-580-5937 | 5 | 54 | 4730-01-092-3029 | 1 | 35 |
| 5330-00-580-5939 | 5 | 49 | 4730-01-149-5795 | 1 | 26 |
| 5315-00-616-5514 | 8 | 11 | 5330-02-091-0258 | 1 | 8 |

| PART NUMBER | FSCM | FIG NO | ITEM NO | PART NUMBER | FSCM | FIG NO | ITEM NO |
|--------------|------|--------|---------|-------------|-------|--------|---------|
| A58 | | 71176 | 8 | MS51953-25 | 96906 | 5 | 69 |
| FF-S-111 | | 81348 | 7 | MS51953-25 | 96906 | 8 | 121 |
| FFN105 | | 81348 | 7 | MS51953-25 | 96906 | 8 | 124 |
| F-3/4 | | 71176 | 8 | MS51953-25 | 96906 | 8 | 129 |
| LM6701C | | 01605 | 8 | MS51953-33 | 96906 | 5 | 71 |
| LM67048 | | 01605 | 8 | MS51953-33 | 96906 | 5 | 74 |
| L4461C | | 01605 | 8 | MS51953-33 | 96906 | 8 | 93 |
| L44649 | | 01605 | 8 | MS51953-35 | 96906 | 5 | 68 |
| MS-51953-97 | | 96906 | 8 | MS51953-35 | 96906 | 5 | 76 |
| MS15795-814 | | 96906 | 8 | MS51953-57 | 96906 | 5 | 78 |
| MS21083N08 | | 96906 | 8 | MS51953-97 | 96906 | 8 | 29 |
| MS27972-20 | | 96906 | 7 | MS51971-3 | 96906 | 8 | 5 |
| MS29561-008 | | 96906 | 5 | MS51971-3 | 96906 | 8 | 32 |
| MS29561-009 | | 96906 | 5 | MS51971-3 | 96906 | 8 | 130 |
| MS29561-019 | | 96906 | 5 | M36CR832-58 | 02615 | 1 | 9 |
| MS29561-210 | | 96906 | 8 | V-230 | 01605 | 8 | 35 |
| MS29561-214 | | 96906 | 8 | 1-05-1004-5 | 19272 | 5 | 3 |
| MS35207-266 | | 96906 | 8 | 1-10-15-3 | 19272 | 2 | 8 |
| MS35275-245 | | 96906 | 8 | 1-10-28-3 | 19272 | 5 | 29 |
| MS35276-279 | | 96906 | 5 | 1-20-06-3 | 19272 | 7 | 17 |
| MS35307-303 | | 96906 | 8 | 1-20-29-2 | 19272 | 2 | 9 |
| MS35307-303 | | 96906 | 8 | 1-20-30-3 | 19272 | 7 | 26 |
| MS35307-308 | | 96906 | 8 | 1-21-10-3 | 19272 | 8 | 20 |
| MS35307-314 | | 96906 | 8 | 1-4342 | 19272 | 1 | 10 |
| MS35307-360 | | 96906 | 8 | 1-4375 | 19272 | 8 | 140 |
| MS35307-364 | | 96906 | 8 | 1-4376 | 19272 | 8 | 142 |
| MS35307-364 | | 96906 | 8 | 1-5100-68 | 19272 | 5 | 63 |
| MS35338-139 | | 96906 | 8 | 11-4126 | 19272 | 5 | 34 |
| M235338-139 | | 96906 | 8 | 11-4317 | 19272 | 5 | 26 |
| MS35338-141 | | 96906 | 8 | 11-4351-1 | 19272 | 5 | 82 |
| MS35338-141 | | 96906 | 8 | 11-5529 | 19272 | 5 | 38 |
| MS35338-141 | | 96906 | 8 | 11-5628 | 19272 | 5 | 58 |
| MS35649-2254 | | 96906 | 7 | 11-5269 | 19272 | 5 | 59 |
| MS35649-2254 | | 96906 | 8 | 11-5630 | 19272 | 5 | 52 |
| MS35649-2254 | | 96906 | 8 | 11-5631 | 19272 | 5 | 60 |
| MS35756-6 | | 96906 | 8 | 11-5632 | 19272 | 5 | 57 |
| MS51095-334 | | 96906 | 8 | 11-5633 | 19272 | 5 | 56 |
| MS51095-334 | | 96906 | 8 | 11-5634 | 19272 | 5 | 55 |
| MS51953-102 | | 96906 | 8 | 11-5637 | 19272 | 5 | 53 |
| MS51953-25 | | 96906 | 5 | 11-5640 | 19272 | 5 | 48 |
| MS51953-25 | | 96906 | 5 | 11-5642 | 19272 | 5 | 46 |
| MS51953-25 | | 96906 | 5 | 11-5693 | 19272 | 5 | 6 |
| MS51953-25 | | 96906 | 5 | 11-6101 | 19272 | 7 | 10 |
| MS51953-25 | | 96906 | 5 | 11-6102 | 19272 | 7 | 6 |

NATIONAL STOCK NUMBER AND PART NUMBER INDEX

| PART NUMBER | FSCM | FIG NO | ITEM NO | PART NUMBER | FSCM | FIG NO | ITEM NO |
|-------------|-------|--------|---------|-------------|-------|--------|---------|
| 11-6103 | 19272 | 7 | 7 | 20-4591 | 19272 | 4 | 6 |
| 11-6104 | 19272 | 7 | 8 | 20-4591 | 19272 | 4 | 20 |
| 11-6113 | 19272 | 7 | 18 | 20-4592 | 19272 | 4 | 5 |
| 11-6114 | 19272 | 7 | 9 | 20-4616 | 19272 | 3 | 1 |
| 11-6116 | 19272 | 7 | 20 | 20-5000 | 19272 | 5 | 27 |
| 11-6117 | 19272 | 7 | 19 | 20-5014 | 19272 | 5 | 17 |
| 11-6119 | 19272 | 7 | 21 | 20-5016 | 19272 | 5 | 18 |
| 11-6137 | 19272 | 8 | 24 | 20-5021 | 19272 | 5 | 24 |
| 11-6138 | 19272 | 8 | 135 | 20-5030 | 19272 | 5 | 25 |
| 11-6139 | 19272 | 8 | 138 | 20-5040 | 19272 | 5 | 20 |
| 1111 | 01605 | 8 | 91 | 20-5082 | 19272 | 5 | 4 |
| 1120 | 75336 | 5 | 79 | 20-5572 | 19272 | 1 | 35 |
| 1120 | 75336 | 8 | 126 | 20-5617 | 19272 | 4 | 19 |
| 1153 | 01605 | 8 | 104 | 20-5651 | 19272 | 1 | 16 |
| 1174 | 01605 | 8 | 57 | 20-5652 | 19272 | 1 | 32 |
| 11752-1 | 90526 | 2 | 6 | 20-5652 | 19272 | 1 | 13 |
| 1210-2 | 01605 | 8 | 79 | 20-5654 | 19272 | 1 | 17 |
| 1227 | 01605 | 8 | 86 | 20-5660 | 19272 | 1 | 1 |
| 1244 | 01605 | 8 | 46 | 20-5962 | 19272 | 1 | 7 |
| 1265 | 01605 | 8 | 89 | 20-5963 | 19272 | 1 | 29 |
| 1291 | 01605 | 8 | 103 | 20-5964 | 19272 | 1 | 21 |
| 1316 | 01605 | 8 | 71 | 20-5965 | 19272 | 1 | 24 |
| 1319 | 01605 | 8 | 80 | 20-5966 | 19272 | 1 | 4 |
| 1321 | 01605 | 8 | 84 | 20-5967 | 19272 | 1 | 5 |
| 1353 | 01605 | 8 | 73 | 20-5968 | 19272 | 1 | 6 |
| 1357 | 01605 | 8 | 105 | 20-5972 | 19272 | 1 | 31 |
| 1358 | 01605 | 8 | 102 | 20-5973 | 19272 | 1 | 36 |
| 1379 | 01605 | 8 | 95 | 20-5974 | 19272 | 1 | 22 |
| 1382 | 01605 | 8 | 98 | 20-5977 | 19272 | 1 | 15 |
| 1383 | 01605 | 8 | 96 | 20-5980 | 19272 | 2 | 15 |
| 1390 | 01605 | 8 | 97 | 20-5991 | 19272 | 5 | 30 |
| 1394 | 01605 | 8 | 74 | 20-5993 | 19272 | 5 | 32 |
| 1396 | 01605 | 8 | 113 | 20-5994 | 19272 | 5 | 28 |
| 1397 | 01605 | 8 | 101 | 20-5997 | 19272 | 2 | 1 |
| 1398 | 01605 | 8 | 116 | 20-5998 | 19272 | 2 | 10 |
| 1399 | 01605 | 8 | 87 | 20-5999 | 19272 | 2 | 11 |
| 1400 | 01605 | 8 | 111 | 20-6000 | 19272 | 2 | 13 |
| 1402 | 01605 | 8 | 115 | 20-6020 | 19272 | 2 | 4 |
| 1403 | 01605 | 8 | 107 | 20-6026 | 19272 | 7 | 5 |
| 1430 | 01605 | 8 | 108 | 20-6027 | 19272 | 7 | 1 |
| 1459 | 01605 | 8 | 37 | 20-6028 | 19272 | 7 | 2 |
| 1459 | 01605 | 8 | 122 | 20-6029 | 19272 | 7 | 3 |
| 1460 | 01605 | 8 | 85 | 20-6030 | 19272 | 7 | 4 |
| 15002-1 | 90526 | 2 | 5 | 20-6032 | 19272 | 7 | 11 |
| 1521 | 01605 | 8 | 88 | 20-6033 | 19272 | 7 | 12 |
| 1524 | 01605 | 8 | 77 | 20-6034 | 19272 | 7 | 13 |
| 1533 | 01605 | 8 | 82 | 20-6035 | 19272 | 7 | 14 |
| 1534 | 01605 | 8 | 83 | 20-6036 | 19272 | 7 | 15 |
| 1537 | 01605 | 8 | 76 | 20-6044 | 19272 | 7 | 25 |
| 1548 | 01605 | 8 | 78 | 20-6054 | 19272 | 8 | 4 |
| 1549 | 01605 | 8 | 81 | 20-6055 | 19272 | 8 | 145 |
| 17433 | 81321 | 1 | 14 | 20-6056 | 19272 | 8 | 141 |
| 17433 | 81321 | 1 | 23 | 20-6057 | 19272 | 8 | 16 |
| 17433 | 81321 | 1 | 33 | 20-6058 | 19272 | 8 | 15 |
| 1923 | 01605 | 8 | 36 | 20-6059 | 19272 | 8 | 17 |
| 1970 | 01605 | 8 | 90 | 20-6060 | 19272 | 8 | 12 |
| 1978 | 01605 | 8 | 72 | 20-6061 | 19272 | 8 | 26 |
| 2-4340 | 19272 | 5 | 23 | 20-6637 | 19272 | 8 | 146 |
| 2A016-3 | 97403 | 8 | 21 | 2023 | 01605 | 8 | 64 |
| 2BK50H | 71176 | 8 | 9 | 2035 | 01605 | 8 | 63 |
| 20-179 | 96480 | 5 | 85 | 2036 | 01605 | 8 | 69 |
| 20-311 | 96480 | 5 | 84 | 2037 | 01605 | 8 | 70 |
| 203437410 | 80557 | 8 | 143 | 2057 | 01605 | 8 | 82 |
| 20-403 | 96480 | 5 | 86 | 2057 | 01605 | 8 | 68 |
| 20-4143 | 19272 | 5 | 66 | 2058 | 01605 | 8 | 66 |
| 20-4144 | 19272 | 5 | 64 | 2097 | 01605 | 8 | 55 |
| 20-4325 | 19272 | 4 | 11 | 2099 | 01605 | 8 | 39 |
| 20-4325 | 19272 | 4 | 18 | 2104 | 01605 | 8 | 41 |
| 20-4400-4 | 19272 | 5 | 7 | 2105 | 01605 | 8 | 51 |
| 20-4435-1 | 19272 | 5 | 11 | 2106 | 01605 | 8 | 49 |
| 20-4438-1 | 19272 | 5 | 10 | 2107 | 01605 | 8 | 52 |
| 20-4439-1 | 19272 | 5 | 9 | 2113 | 01605 | 8 | 50 |
| 20-4440-1 | 19272 | 5 | 12 | 2128 | 01605 | 8 | 42 |
| 20-4570-4 | 19272 | 5 | 33 | 2129 | 01605 | 8 | 43 |
| 20-4584 | 19272 | 4 | 4 | 2130 | 01605 | 8 | 44 |
| 20-4585 | 19272 | 4 | 10 | 2132 | 01605 | 8 | 45 |
| 20-4585 | 19272 | 4 | 17 | 2136 | 01605 | 8 | 38 |
| 20-4586 | 19272 | 4 | 12 | 2138 | 01605 | 8 | 59 |
| 20-4587 | 19272 | 4 | 3 | 2143 | 01605 | 8 | 60 |
| 20-4588 | 01605 | 2 | 14 | 2148 | 01605 | 8 | 58 |
| 20-4590 | 19272 | 4 | 13 | | | | |

NATIONAL STOCK NUMBER AND PART NUMBER INDEX

| PART NUMBER | FSCM | FIG NO | ITEM NO | PART NUMBER | FSCM | FIG NO | ITEM NO |
|-------------|-------|--------|---------|-------------|-------|--------|---------|
| 2149 | 01605 | 8 | 65 | 50-4360-7 | 19272 | 4 | 2 |
| 2157 | 01605 | 8 | 61 | 50-4419-1 | 19272 | 5 | 8 |
| 2158 | 01605 | 8 | 67 | 50-4581 | 19272 | 5 | 62 |
| 2159 | 01605 | 8 | 54 | 50-5004 | 19272 | 5 | 83 |
| 2160 | 01605 | 8 | 47 | 50-5005 | 19272 | 5 | 2 |
| 2170 | 01605 | 8 | 48 | 50-6506 | 19272 | 1 | 25 |
| 22NU040 | 72962 | 8 | 22 | 50-6507 | 19272 | 1 | 3 |
| 22NU040 | 72962 | 8 | 139 | 50-6508 | 19272 | 1 | 11 |
| 3-4358 | 19272 | 1 | 18 | 50-6509 | 19272 | 1 | 26 |
| 3-4359 | 19272 | 1 | 2 | 50-6510 | 19272 | 1 | |
| 3814-1 | 90526 | 2 | 7 | 50-6511 | 19272 | 1 | 12 |
| 4-4300-16 | 19272 | 5 | 65 | 50-6513 | 19272 | 1 | 20 |
| 4-4301-1 | 19272 | 8 | 31 | 50-6523 | 19272 | 5 | |
| 4-4330 | 19272 | 5 | 80 | 50-6524 | 19272 | 5 | 81 |
| 4-4340 | 19272 | 5 | 22 | 50-6602-48 | 19272 | 3 | |
| 4-4344 | 19272 | 5 | 19 | 50-6605 | 19272 | 5 | 1 |
| 4-4347 | 19272 | 5 | 21 | 50-6611 | 19272 | 5 | 5 |
| 4-4406 | 19272 | 2 | 2 | 50-6612 | 19272 | 2 | 3 |
| 4-4420 | 19272 | 1 | 30 | 50-6615 | 19272 | 3 | 3 |
| 4-4437 | 19272 | 1 | 28 | 50-6616 | 19272 | 3 | 4 |
| 4-4438 | 19272 | 1 | 19 | 50-6618 | 19272 | 7 | |
| 4-4438 | 19272 | 1 | 8 | 50-6624 | 19272 | 8 | |
| 41-7-4-3 | 19272 | 3 | 2 | 50-6634 | 19272 | 8 | 134 |
| 43-15-1-4 | 19272 | 1 | 27 | 6-4300 | 19272 | 5 | 14 |
| 434 | 00165 | 8 | 25 | 6-4325-160 | 19272 | 5 | 37 |
| 450245 | 11314 | 8 | 99 | 6-4341 | 19272 | 2 | 12 |
| 5-01-33-8 | 19272 | 5 | 77 | 6-4348-200 | 19272 | 8 | 127 |
| 5-01-55-8 | 19272 | 8 | 30 | 6-4420 | 19272 | 5 | 45 |
| 5-02-22-8 | 19272 | 5 | 44 | 6-4420 | 19272 | 5 | 73 |
| 5-02-22-8 | 19272 | 5 | 72 | 625T | 75336 | 8 | 125 |
| 5-02-22-8 | 19272 | 8 | 94 | 7-102-125 | 19272 | 4 | 14 |
| 5-02-55-8 | 19272 | 8 | 118 | 7-103-150 | 19272 | 4 | 21 |
| 5-03-222-8 | 19272 | 5 | 40 | 7-103-225 | 19272 | 4 | 7 |
| 5-03-222-8 | 19272 | 5 | 67 | 7-1111-150 | 19272 | 4 | 15 |
| 5-03-222-8 | 19272 | 5 | 70 | 7-116-125 | 19272 | 4 | 8 |
| 5-03-222-8 | 19272 | 8 | 120 | 7-118-225 | 19272 | 4 | 1 |
| 5-04-22-8 | 19272 | 8 | 92 | 7500-1 | 79250 | 6 | 3 |
| 5-04-22-8 | 19272 | 8 | 123 | 7500-10 | 79250 | 6 | 2 |
| 5-05-22-8 | 19272 | 5 | 42 | 7500-11 | 79250 | 6 | 10 |
| 5-05-55-8 | 19272 | 8 | 28 | 7500-12 | 79250 | 6 | 9 |
| 5-06-2222-8 | 19272 | 5 | 75 | 7500-16 | 79250 | 6 | 4 |
| 5-06-2222-8 | 19272 | 8 | 128 | 7500-17 | 79250 | 6 | 5 |
| 5-07-12-8 | 19272 | 1 | 34 | 7500-18 | 79250 | 6 | 7 |
| 5-07-22-8 | 19272 | 5 | 51 | 7500-19 | 79250 | 6 | 8 |
| 5-10-4 | 19272 | 5 | 36 | 7500-20 | 79250 | 6 | 6 |
| 5-10-4 | 19272 | 8 | 119 | 7500-26 | 79250 | 6 | 1 |
| 5-10-9 | 19272 | 5 | 35 | 7531 | 79250 | 6 | |
| 50-4360-1 | 19272 | 4 | 9 | 9-4300-7 | 19272 | 5 | 15 |
| 50-4360-10 | 19272 | 4 | 16 | | | | |

NATIONAL STOCK NUMBER AND PART NUMBER SUPPLEMENTAL INDEX

| STOCK NUMBER | FIGURE NO | ITEM NO | STOCK NUMBER | FIGURE NO | ITEM NO |
|------------------|-----------|---------|------------------|-----------|---------|
| 5330-00-166-0993 | 5 | 65 | 5330-01-091-4173 | 5 | 31 |
| 3030-00-605-1377 | 8 | 8 | 2990-01-091-4220 | 5 | 8 |
| 3110-00-606-1840 | 8 | 106 | 5330-01-091-4581 | 2 | 2 |
| 3110-00-606-1841 | 8 | 109 | 5340-01-091-6154 | 7 | 11 |
| 3110-00-926-1379 | 8 | 110 | 5307-01-091-6198 | 8 | 90 |
| 2040-01-019-8260 | 5 | 15 | 4330-01-091-6965 | 8 | 42 |
| 4940-01-072-5922 | 2 | | 5360-01-091-7173 | 1 | 2 |
| 4940-01-088-3229 | 7 | | 5330-01-091-7963 | 1 | 28 |
| 4240-01-090-6698 | 8 | 104 | 5330-01-091-7964 | 8 | 50 |
| 4720-01-091-1378 | 4 | 14 | 5330-01-091-8075 | 5 | 22 |
| 4820-01-091-1458 | 1 | 17 | 5330-01-091-8588 | 8 | 59 |
| 4710-01-091-1587 | 8 | 12 | 5330-01-091-8589 | 8 | 71 |
| 6685-01-091-2009 | 5 | 45 | 5330-01-092-0258 | 1 | 8 |
| 6685-01-091-2009 | 5 | 73 | 5330-01-092-0258 | 1 | 19 |
| 4720-01-091-2829 | 4 | 21 | 4330-01-092-0297 | 8 | 43 |
| 6685-01-091-3095 | 8 | 127 | 4010-01-092-1096 | 7 | 15 |
| 4710-01-091-3138 | 2 | 3 | 4730-01-092-1681 | 4 | 9 |
| 4310-01-091-3142 | 5 | 38 | 4730-01-092-1698 | 5 | 10 |
| 5305-01-091-3489 | 7 | 21 | 4730-01-092-3022 | 4 | 2 |
| 5330-01-091-3517 | 8 | 66 | 4730-01-092-3029 | 1 | 35 |
| 3110-01-091-3533 | 5 | 23 | 3110-01-092-4765 | 8 | 101 |
| 5340-01-091-3672 | 7 | 25 | 5320-01-092-5524 | 7 | 18 |
| 5330-01-091-3930 | 5 | 19 | 5320-01-092-5525 | 7 | 19 |
| 5330-01-091-3932 | 1 | 30 | 5340-01-092-0095 | 7 | 14 |
| 5330-01-091-3933 | 5 | 21 | 4310-01-093-0582 | 8 | 67 |
| 4720-01-091-4015 | 5 | 5 | 5330-01-093-3871 | 8 | 107 |

NATIONAL STOCK NUMBER AND PART NUMBER SUPPLEMENTAL INDEX

| PART NUMBER | FSCM | FIG NO | ITEM NO | PART NUMBER | FSCM | FIG NO | ITEM NO |
|-------------|-------|-----------|------------|-------------|-------|-----------|------------|
| 11-5638 | 19272 | 5 | 50 | 20-6066 | 19272 | 8 | 144 |
| 1404 | 01605 | 8 | 75 | 50-6539 | 19272 | 2 | |
| 20-6062 | 19272 | 8 | 27 | | | | |

By Order of the Secretary of the Army:

E. C. MEYER
General, United States Army
Chief of Staff

Official:

J. C. PENNINGTON
Major General, United States Army
The Adjutant General

DISTRIBUTION :

To be distributed in accordance with DA Form 12-28, Organizational Maintenance Requirements for Respirators, Paint Spray.



SOMETHING WRONG WITH THIS MANUAL?

THEN... JOT DOWN THE DOPE ABOUT IT ON THIS FORM, TEAR IT OUT, FOLD IT AND DROP IT IN THE MAIL!

FROM: (YOUR UNIT'S COMPLETE ADDRESS)

PFC JOHN DOE
COA, 3^d ENGINEER BN
FT. LEONARD WOOD MO 63108

DATE

PUBLICATION NUMBER

TM 5-4940-228-24P

DATE

10 Nov 80

TITLE Organizational, Direct Support and General Support Maintenance RPST for Spray Outfit, Paint NSN 4940-00-

255-8683

BE EXACT... PIN-POINT WHERE IT IS

IN THIS SPACE TELL WHAT IS WRONG AND WHAT SHOULD BE DONE ABOUT IT:

| PAGE NO. | PARA-GRAPH | FIGURE NO. | TABLE NO. |
|----------|------------|------------|-----------|
| 6 | 2-1 a | | |
| 81 | | 4-3 | |
| 125 | line 20 | | |

In line 6 of paragraph 2-1a the manual states the engine has 6 cylinders. The engine on my set only has 4 cylinders. Change the manual to show 4 cylinders.

Callout 16 on figure 4-3 is pointing at a bolt. In the key to fig. 4-3, item 16 is called a skim. Please correct one or the other.

Ordered a gasket, item 19 on figure B-16 by NSN 2910-00-762-3001. I got a gasket but it doesn't fit. Supply says I got what I ordered, so the NSN is wrong. Please give me a good NSN.

~~SAMPLE~~

TYPED NAME, GRADE OR TITLE, AND TELEPHONE NUMBER

JOHN DOE, PFC (268) 317-7111

SIGN HERE:

John Doe



THEN... JOT DOWN THE DOPE ABOUT IT ON THIS FORM. CAREFULLY TEAR IT OUT, FOLD IT AND DROP IT IN THE MAIL!

SOMETHING WRONG WITH THIS PUBLICATION?

FROM: (PRINT YOUR UNIT'S COMPLETE ADDRESS)

DATE SENT

PUBLICATION NUMBER
TM 5-4940-228-24P

PUBLICATION DATE
10 Nov 80

PUBLICATION TITLE Organizational, DS &
GS Maintenance RPSTL for Spray
Outfit. Part NSN 4940-00-255-8683

BE EXACT... PIN-POINT WHERE IT IS

| PAGE NO. | PARA-GRAPH | FIGURE NO. | TABLE NO. |
|----------|------------|------------|-----------|
| | | | |
| | | | |
| | | | |
| | | | |
| | | | |

IN THIS SPACE TELL WHAT IS WRONG AND WHAT SHOULD BE DONE ABOUT IT:

PRINTED NAME, GRADE OR TITLE, AND TELEPHONE NUMBER

SIGN HERE:

FILL IN YOUR
UNIT'S ADDRESS

FOLD BACK

DEPARTMENT OF THE ARMY

OFFICIAL BUSINESS
PENALTY FOR PRIVATE USE \$300

POSTAGE AND FEES PAID
DEPARTMENT OF THE ARMY
DOD 314



COMMANDER
U S ARMY SUPPORT AND AVIATION MATERIEL READINESS COMMAND
ATTN: DRSTS-MTT
4300 GOODFELLOW BOULEVARD
ST. LOUIS, MO 63120

The Metric System and Equivalents

Linear Measure

1 centimeter = 10 millimeters = .39 inch
 1 decimeter = 10 centimeters = 3.94 inches
 1 meter = 10 decimeters = 39.37 inches
 1 dekameter = 10 meters = 32.8 feet
 1 hectometer = 10 dekameters = 328.08 feet
 1 kilometer = 10 hectometers = 3,280.8 feet

Weights

1 centigram = 10 milligrams = .15 grain
 1 decigram = 10 centigrams = 1.54 grains
 1 gram = 10 decigrams = .035 ounce
 1 dekagram = 10 grams = .35 ounce
 1 hectogram = 10 dekagrams = 3.52 ounces
 1 kilogram = 10 hectograms = 2.2 pounds
 1 quintal = 100 kilograms = 220.46 pounds
 1 metric ton = 10 quintals = 1.1 short tons

Liquid Measure

1 centiliter = 10 milliliters = .34 fl. ounce
 1 deciliter = 10 centiliters = 3.38 fl. ounces
 1 liter = 10 deciliters = 33.81 fl. ounces
 1 dekaliter = 10 liters = 2.64 gallons
 1 hectoliter = 10 dekaliters = 26.42 gallons
 1 kiloliter = 10 hectoliters = 264.18 gallons

Square Measure

1 sq. centimeter = 100 sq. millimeters = .155 sq. inch
 1 sq. decimeter = 100 sq. centimeters = 15.5 sq. inches
 1 sq. meter (centare) = 100 sq. decimeters = 10.76 sq. feet
 1 sq. dekameter (are) = 100 sq. meters = 1,076.4 sq. feet
 1 sq. hectometer (hectare) = 100 sq. dekameters = 2.47 acres
 1 sq. kilometer = 100 sq. hectometers = .386 sq. mile

Cubic Measure

1 cu. centimeter = 1000 cu. millimeters = .06 cu. inch
 1 cu. decimeter = 1000 cu. centimeters = 61.02 cu. inches
 1 cu. meter = 1000 cu. decimeters = 35.31 cu. feet

Approximate Conversion Factors

| To change | To | Multiply by | To change | To | Multiply by |
|---------------|--------------------|-------------|--------------------|---------------|-------------|
| inches | centimeters | 2.540 | ounce-inches | newton-meters | .007062 |
| feet | meters | .305 | centimeters | inches | .394 |
| yards | meters | .914 | meters | feet | 3.280 |
| miles | kilometers | 1.609 | meters | yards | 1.094 |
| square inches | square centimeters | 6.451 | kilometers | miles | .621 |
| square feet | square meters | .093 | square centimeters | square inches | .155 |
| square yards | square meters | .836 | square meters | square feet | 10.764 |
| square miles | square kilometers | 2.590 | square meters | square yards | 1.196 |
| acres | square hectometers | .405 | square kilometers | square miles | .386 |
| cubic feet | cubic meters | .028 | square hectometers | acres | 2.471 |
| cubic yards | cubic meters | .765 | cubic meters | cubic feet | 35.315 |
| fluid ounces | milliliters | 29.573 | cubic meters | cubic yards | 1.308 |
| pints | liters | .473 | milliliters | fluid ounces | .034 |
| quarts | liters | .946 | liters | pints | 2.113 |
| gallons | liters | 3.785 | liters | quarts | 1.057 |
| ounces | grams | 28.349 | liters | gallons | .264 |
| pounds | kilograms | .454 | grams | ounces | .035 |
| short tons | metric tons | .907 | kilograms | pounds | 2.205 |
| pound-feet | newton-meters | 1.365 | metric tons | short tons | 1.102 |
| pound-inches | newton-meters | .11375 | | | |

Temperature (Exact)

| | | | | |
|----|-------------|-----------------|-------------|----|
| °F | Fahrenheit | 5/9 (after | Celsius | °C |
| | temperature | subtracting 32) | temperature | |

PIN: 047387-003